

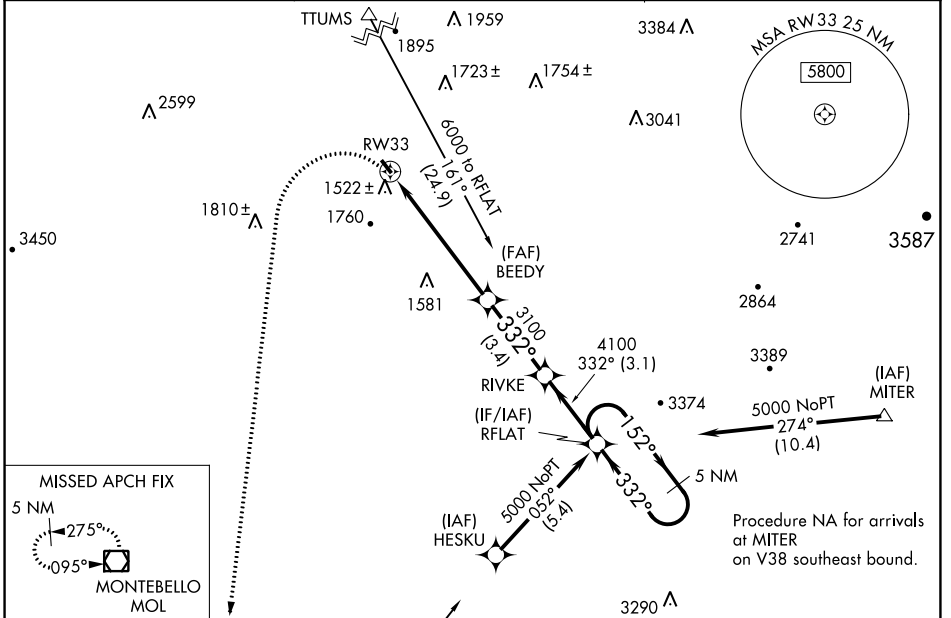
APP CRS 332°	Rwy Idg 2377
	TDZE 1165
	Apt Elev 1165

RNAV (GPS) RWY 33

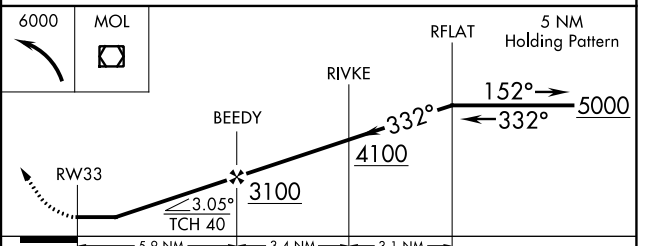
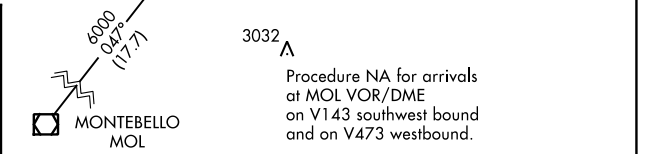
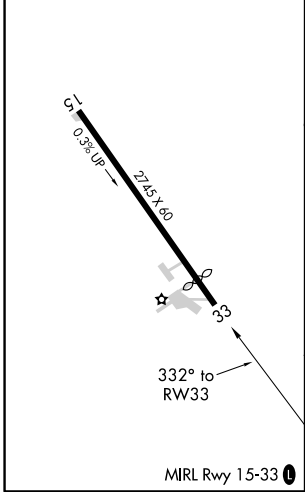
BRIDGEWATER AIR PARK (VBW)

<p>NA</p> <p>DME/DME RNP-0.3 NA. Helicopter visibility reduction below ¾ SM NA. When local altimeter setting not received, use Staunton/Waynesboro/Harrisonburg altimeter setting and increase all MDA 40 feet.</p>	<p>MISSED APPROACH: Climbing left turn to 6000 direct MOL VOR/DME and hold.</p>
--	---

<p>AWOS-3 119.55</p>	<p>POTOMAC APP CON 132.85 323.125</p>	<p>UNICOM 122.7 (CTAF)</p>
---------------------------------	--	---------------------------------------



ELEV 1165	TDZE 1165
-----------	-----------



CATEGORY	A	B	C	D
LNAV MDA	1780-1	615 (700-1)	NA	
<input checked="" type="checkbox"/> CIRCLING	1860-1 695 (700-1)	2020-1¼ 855 (900-1¼)	NA	

NE-3, 08 SEP 2022 to 06 OCT 2022

NE-3, 08 SEP 2022 to 06 OCT 2022