

|  |                        |                             |   |
|--|------------------------|-----------------------------|---|
| LOC/DME I-VJI<br><b>108.3</b><br>Chan 20 | APP CRS<br><b>241°</b> | Rwy Idg<br>TDZE<br>Apt Elev | <b>4471</b><br><b>2087</b><br><b>2087</b> |
|--|------------------------|-----------------------------|---|

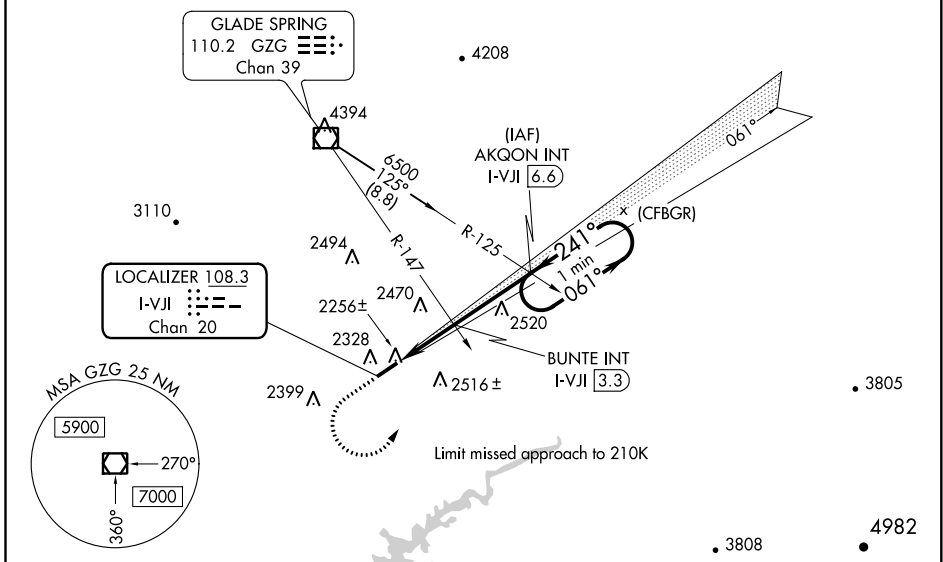
**LOC RWY 24**  
VIRGINIA HIGHLANDS (VJI)

**⚠** Inop table does not apply. GPS required. Cat D Straight-in minima NA when using Tri-Cities altimeter setting. When local altimeter setting not received; use Tri-Cities altimeter setting and increase all MDA 140 feet; and increase S-24 Cat A and B and Circling Cat B visibility ¼ mile, and S-24 Cat C and Circling Cat C visibility ½ mile. Increase BUNTE fix minimums S-24 Cat C visibility ⅜ mile, Circling Cats A and B visibility ¼ mile, and Circling Cat C visibility ½ mile. Helicopter visibility reduction below 1 SM NA.

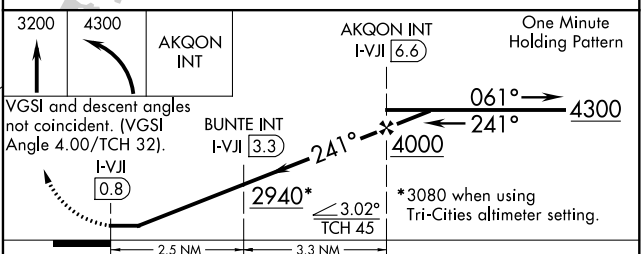
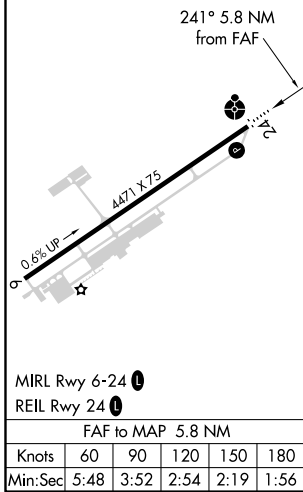


**MISSED APPROACH:** Climb to 3200 then climbing left turn to 4300 direct AKQON INT and hold.

|                          |   |                                |
|--------------------------|---|--------------------------------|
| AWOS-3<br><b>128.125</b> | TRI-CITY APP CON ★<br><b>125.25 349.0</b> | UNICOM<br><b>122.8(CTAF) 0</b> |
|--------------------------|---|--------------------------------|



|           |           |
|-----------|-----------|
| ELEV 2087 | TDZE 2087 |
|-----------|-----------|



| CATEGORY           | A       |              | B           |              | C            |              | D            |        |
|--------------------|---------|--------------|-------------|--------------|--------------|--------------|--------------|--------|
|                    | S-24    | 2940-1       | 853 (900-1) | 2940-1¼      | 853 (900-1¼) | 2940-2½      | 853 (900-2½) | 3080-3 |
| <b>C</b> CIRCLING  | 2940-1¼ | 853 (900-1¼) | 2940-2½     | 853 (900-2½) | 3080-3       | 993 (1000-3) |              |        |
| BUNTE FIX MINIMUMS |         |              |             |              |              |              |              |        |
| S-24               | 2520-1  | 433 (500-1)  | 2520-1¼     | 433 (500-1¼) |              |              |              |        |
| <b>C</b> CIRCLING  | 2860-1  | 773 (800-1)  | 2900-2½     | 813 (900-2½) | 3080-3       | 993 (1000-3) |              |        |

NE-3, 08 SEP 2022 to 06 OCT 2022

NE-3, 08 SEP 2022 to 06 OCT 2022