

WAAS CH <b>82411</b> <b>W06A</b>	APP CRS <b>061°</b>	Rwy Idg TDZE Apt Elev	<b>4471</b> <b>2068</b> <b>2087</b>
--	------------------------	-----------------------------	---

# RNAV (GPS) RWY 6

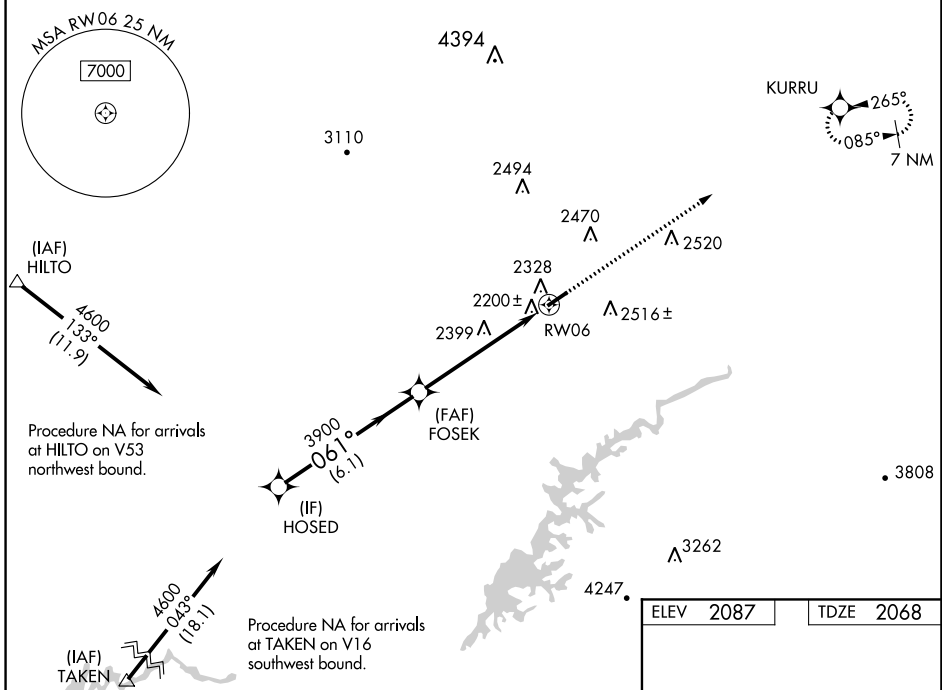
VIRGINIA HIGHLANDS (VJI)

RNP APCH.

**▼** Rwy 6 helicopter visibility reduction below 1 SM NA. For uncompensated Baro-VNAV systems,  
**▲** LNAV/VNAV NA below -19°C or above 54°C.

MISSED APPROACH:  
 Climb to 7300 direct  
 KURRU and hold,  
 continue climb-in-hold  
 to 7300.

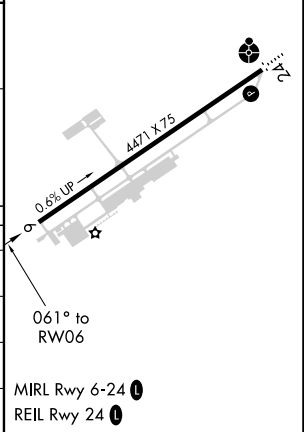
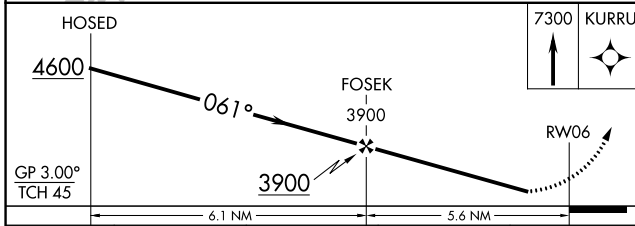
AWOS-3 <b>128.125</b>	TRI-CITY APP CON ★ <b>125.25 349.0</b>	UNICOM <b>122.8 (CTAF) 0</b>
--------------------------	---	---------------------------------



NE-3, 08 SEP 2022 to 06 OCT 2022

NE-3, 08 SEP 2022 to 06 OCT 2022

ELEV 2087	TDZE 2068
-----------	-----------



CATEGORY	A	B	C	D
LPV DA	2443-1¼		375 (400-1¼)	
LNAV/VNAV DA	2489-1¼		421 (500-1¼)	
LNAV MDA	2660-1	592 (600-1)	2660-1¾	592 (600-1¾)
CIRCLING	2860-1	773 (800-1)	2860-2¼ 773 (800-2¼)	3080-3 993 (1000-3)