

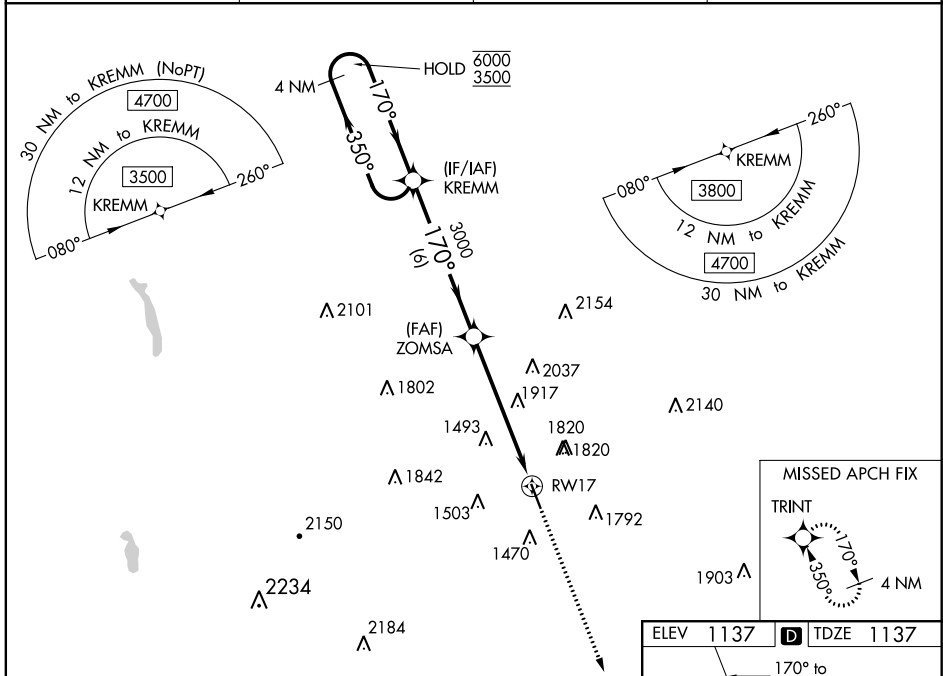
WAAS CH 65818 W17A	APP CRS 170°	Rwy Idg TDZE 1137 Apt Elev 1137	5014
--	------------------------	---	-------------

RNAV (GPS) RWY 17

HAMILTON MUNI (VGC)

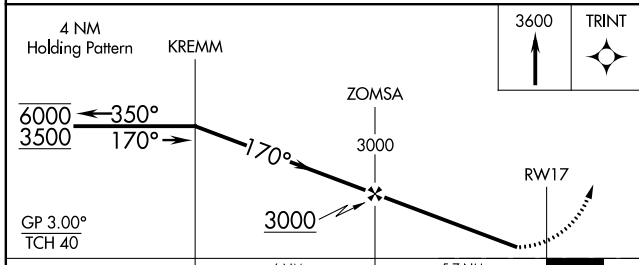
RNP APCH - GPS.			MISSED APPROACH: Climb to 3600 direct TRINT and hold.
▽ Rwy 17 helicopter visibility reduction below 1 SM NA. For uncompensated Baro-VNAV systems, LNAV/VNAV NA below -17°C or above 54°C. Straight-In and Circling Rwy 17 NA at night.			

AWOS-3P 119.425	SYRACUSE APP CON 126.125 269.125	UNICOM 123.0 (CTAF)	122.7
---------------------------	--	-------------------------------	--------------

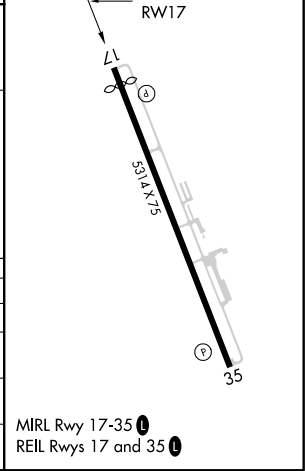


NE-2, 08 SEP 2022 to 06 OCT 2022

NE-2, 08 SEP 2022 to 06 OCT 2022



ELEV 1137		TDZE 1137
------------------	--	------------------



CATEGORY	A	B	C	D
LPV DA	1447-7/8 310 (400-7/8)			NA
LNAV/VNAV DA	2412-5 1275 (1300-5)			NA
LNAV MDA	2220-1/4 1083 (1100-1/4)	2220-1/2 1083 (1100-1/2)	2220-3 1083 (1100-3)	NA
CIRCLING	2220-1/4 1083 (1100-1/4)	2220-1/2 1083 (1100-1/2)	2340-3 1203 (1300-3)	NA

MIRL Rwy 17-35
REIL Rwy 17 and 35