

APP CRS	Rwy Idg	4699
052°	TDZE	434
	Apt Elev	434

RNAV (GPS) RWY 5

SARATOGA COUNTY (5B2)

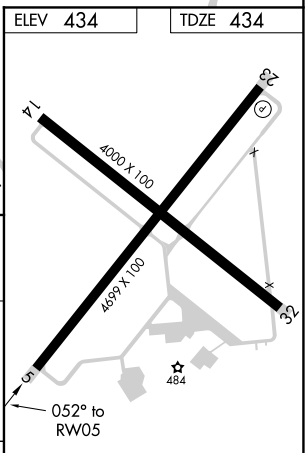
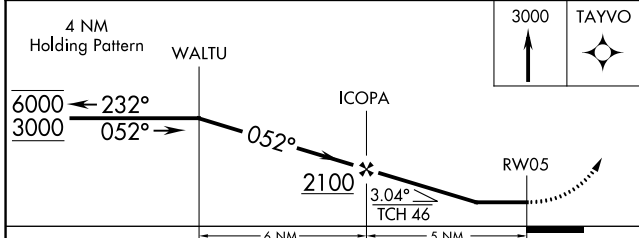
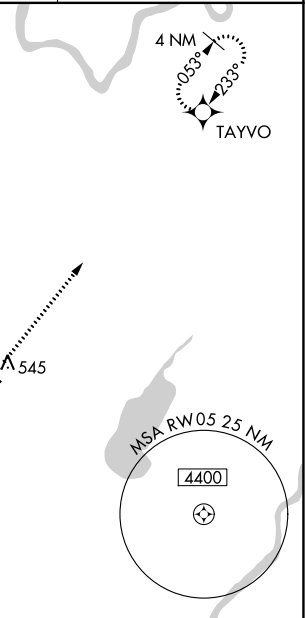
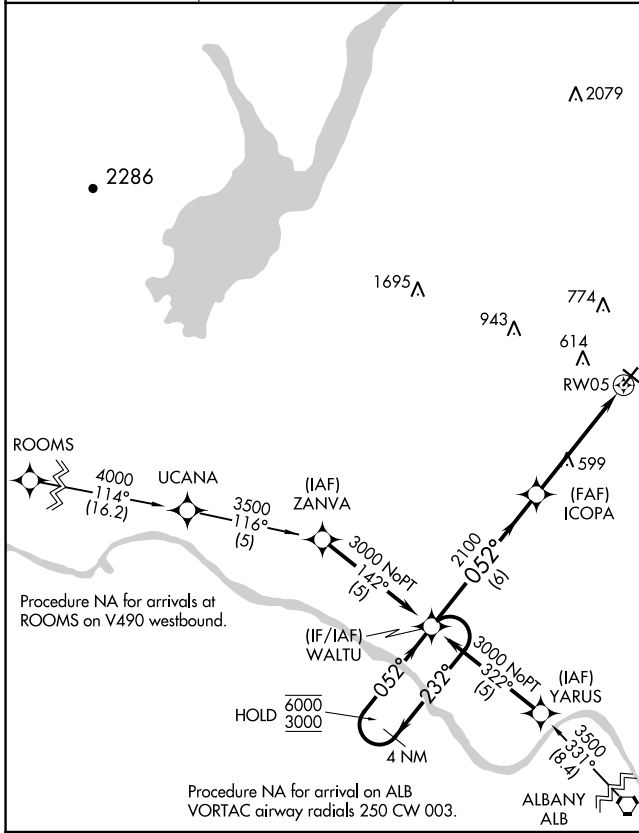
RNP APCH.

▽ Procedure NA at night. Rwy 5 helicopter visibility reduction below 1 SM NA.

▲ NA When local altimeter setting not received, use Albany altimeter setting and increase all MDAs 80 feet and LNAV Cat C/D visibilities 1/8 SM.

MISSED APPROACH: Climb to 3000 direct TAYVO and hold.

AWOS-3 132.025	ALBANY APP CON 118.05 263.075	CLNC DEL (GCO) 118.125	UNICOM 123.075 (CTAF) 0
--------------------------	---	----------------------------------	-----------------------------------



CATEGORY	A	B	C	D
LNAV MDA	860-1	426 (500-1)	860-1 1/4	426 (500-1 1/4)

MIRL Rwy 5-23 0

MIRL Rwy 14-32

REIL Rwy 5 and 23 0

NE-2, 08 SEP 2022 to 06 OCT 2022

NE-2, 08 SEP 2022 to 06 OCT 2022