

VOR/DME CAM <b>115.0</b> Chan <b>97</b>	APP CRS <b>113°</b>	Rwy Idg TDZE Apt Elev	<b>N/A</b> <b>N/A</b> <b>434</b>
---	------------------------	-----------------------------	--

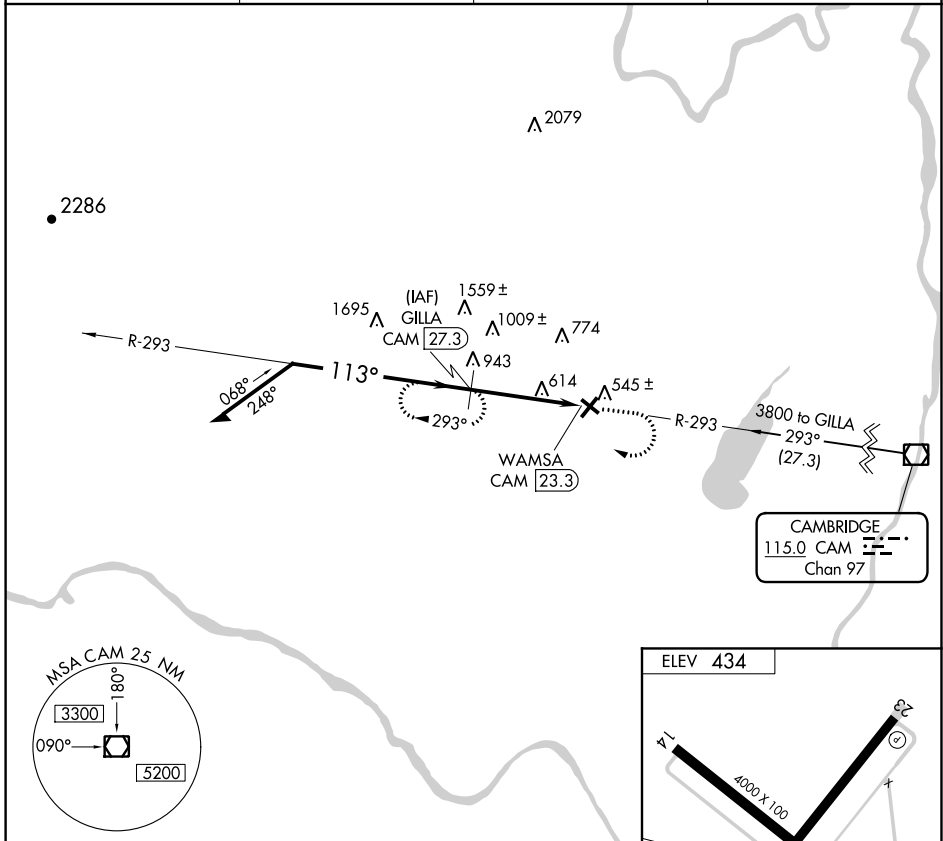
# VOR/DME-A

SARATOGA COUNTY (5B2)

**NA** When local altimeter setting not received, use Albany altimeter setting and increase all MDAs 80 feet and Cat A and C visibility ¼ SM. Night landing: 5,14, 32 NA. Helicopter visibility reduction below 1 SM NA.

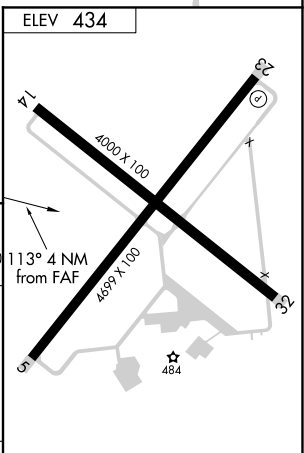
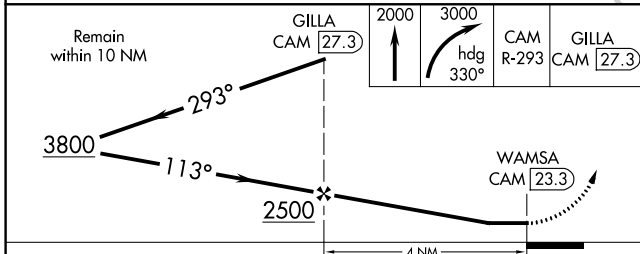
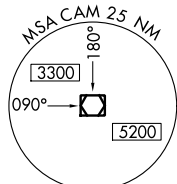
MISSED APPROACH: Climb to 2000 then climbing right turn to 3000 via heading 330° and CAM VOR/DME R-293 to GILLA/CAM 27.3 DME and hold.

AWOS-3 <b>132.025</b>	ALBANY APP CON <b>118.05 263.075</b>	CLNC DEL (GCO) <b>118.125</b>	UNICOM <b>123.075(CTAF) 0</b>
--------------------------	---	----------------------------------	----------------------------------



NE-2, 08 SEP 2022 to 06 OCT 2022

NE-2, 08 SEP 2022 to 06 OCT 2022



CATEGORY	A	B	C	D
CIRCLING	1260-1 826 (900-1)	1260-1¼ 826 (900-1¼)	1260-2½ 826 (900-2½)	1340-3 906 (1000-3)

MIRL Rwy 5-23 0  
MIRL Rwy 14-32  
REIL Rwy 5 and 23 0