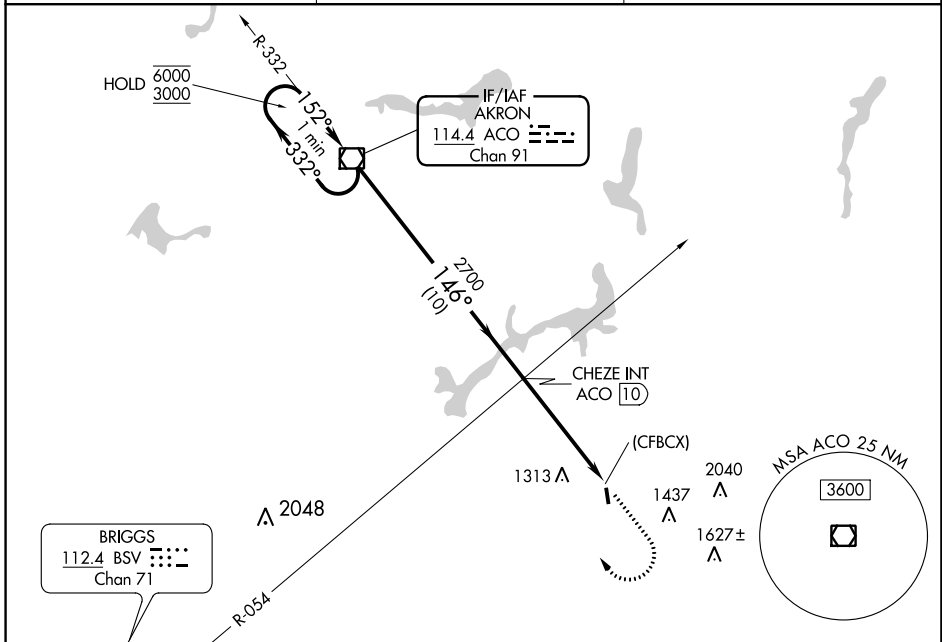


VOR/DME ACO 114.4 Chan 91	APP CRS 146°	Rwy Idg 2768 TDZE 1188 Apt Elev 1188
--	------------------------	---

VOR RWY 18

TRI-CITY (3G6)

<p>▽ Procedure NA at night. Rwy 18 helicopter visibility reduction below 1 SM NA. Use Akron-Canton Rgnl altimeter setting, when not received, use Ravenna altimeter setting.</p> <p>△ NA</p>	<p>MISSED APPROACH: Climb to 3000 then climbing right turn to 3100 direct ACO VOR/DME and hold.</p>	
<p>CAK ASOS 121.05</p>	<p>CLEVELAND APP CON * 125.5 371.875</p>	<p>CTAF 122.9 0</p>



EC-2, 08 SEP 2022 to 06 OCT 2022

EC-2, 08 SEP 2022 to 06 OCT 2022

ELEV	1188	TDZE	1188
------	------	------	------

One Minute Holding Pattern

ACO VOR/DME

6000 ← 332°

3000 → 152°

146°

2700

CHEZE INT ACO (10)

CFBCX

2.79° TCH 40

10 NM

4.8 NM

0.2

CATEGORY	A	B	C	D
S-18	1680-1	492 (500-1)	NA	NA
C CIRCLING	1680-1 492 (500-1)	1800-1 612 (700-1)	NA	NA

LIRL Rwy 18-36 0*	FAF to MAP 4.8 NM				
Knots	60	90	120	150	180
Min:Sec	4:48	3:12	2:24	1:55	1:36