

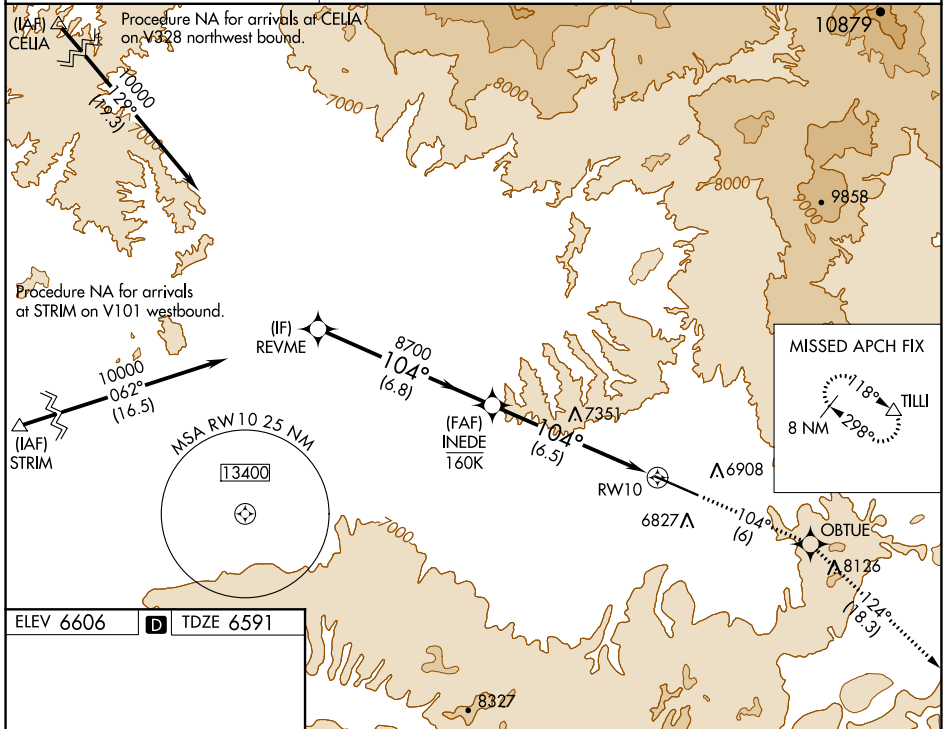
APP CRS	Rwy Idg	9490
104°	TDZE	6591
	Apt Elev	6606

RNAV (RNP) Z RWY 10

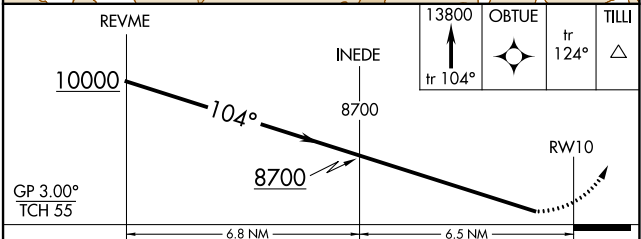
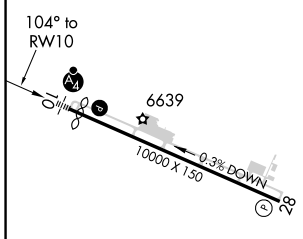
YAMPA VALLEY (HDN)

RNP AR APCH-GPS.	MALSF	MISSED APPROACH: Climb to 13800 on track 104° to OBTUE and on track 124° to TILLI and hold, continue climb-in-hold to 13800. *Missed approach requires minimum climb of 286 feet per NM to 8900.
<p>▼ Rwy 10 helicopter visibility reduction below 3/4 SM NA. For uncompensated Baro-VNAV systems, procedure NA below -28°C or above 54°C. Inop table does not apply to RNP 0.30. For inop ALS, increase RNP 0.20 all Cats visibility to 2 SM.</p> <p>▲</p>		

AWOS-3PT 119.275	DENVER CENTER 120.475 235.975	UNICOM 123.0 (CTAF) 0
----------------------------	---	---------------------------------



ELEV 6606	D TDZE 6591
-----------	--------------------



CATEGORY	A	B	C	D
RNP 0.20 DA*	7016-1 425 (500-1)			
RNP 0.20 DA	7344-1 753 (800-1 7/8)			
RNP 0.30 DA	7949-5 1358 (1400-5)			

AUTHORIZATION REQUIRED

SW-1, 08 SEP 2022 to 06 OCT 2022

SW-1, 08 SEP 2022 to 06 OCT 2022