

LOC/DME I-VMU 108.7 Chan 24	APP CRS 269°	Rwy Idg 5485 TDZE 1064 Apt Elev 1080
---	------------------------	---

ILS or LOC RWY 27

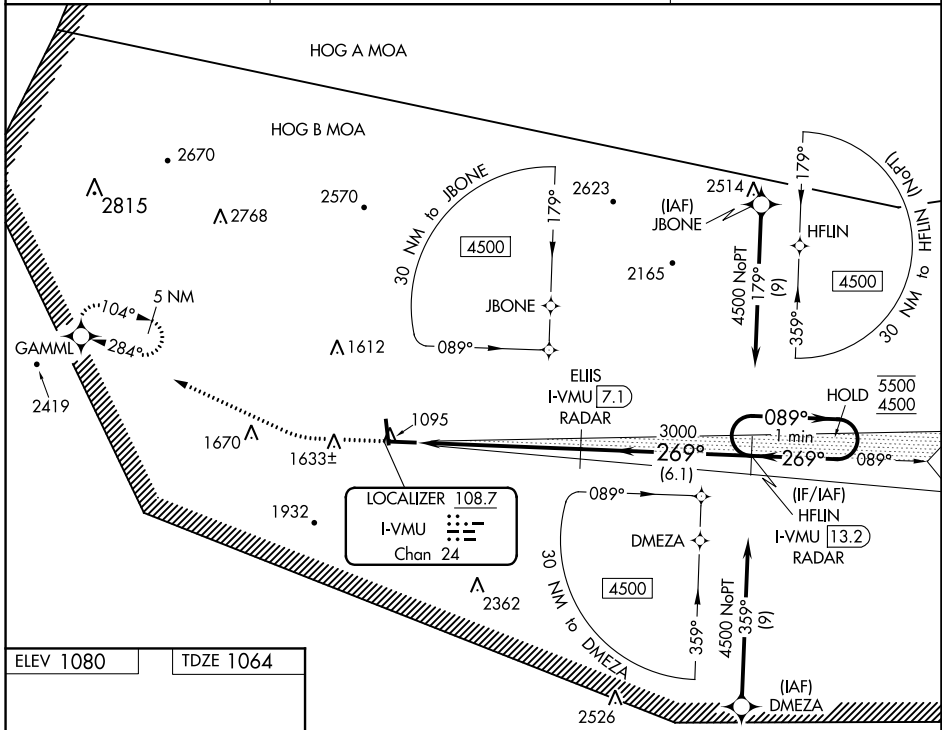
MENA INTERMOUNTAIN MUNI (MEZ)

DME or RADAR required. RNP APCH - GPS.

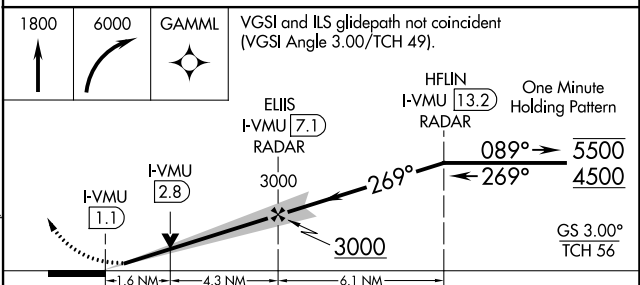
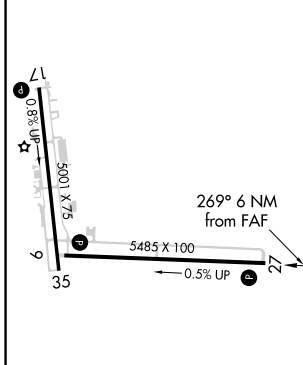
▲ Circling Rwy 35 NA at night.

MISSED APPROACH: Climb to 1800 then climbing right turn to 6000 direct GAMML and hold, continue climb-in-hold to 6000.

AWOS-3 118.025	MEMPHIS CENTER 126.1 269.0	UNICOM 122.8 (CTAF) 0
--------------------------	--------------------------------------	---------------------------------



ELEV 1080	TDZE 1064
-----------	-----------



MIRL Rwy 9-27 and 17-35 REIL Rwy 9, 27 and 35 FAF to MAP 6 NM	1502-1¼	438 (500-1¼)	1620-1⅝ 556 (600-1⅝)	NA
CIRCLING	1840-1 760 (800-1)	2140-1½ 1060 (1100-1½)	2220-3 1140 (1200-3)	NA

SC-1, 08 SEP 2022 to 06 OCT 2022

SC-1, 08 SEP 2022 to 06 OCT 2022