

APP CRS <b>180°</b>	Rwy Idg <b>5001</b>
	TDZE <b>1063</b>
	Apt Elev <b>1080</b>

# RNAV (GPS) RWY 17

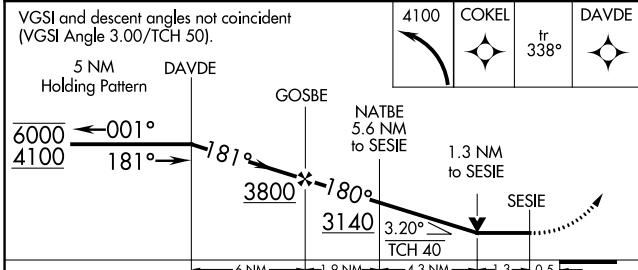
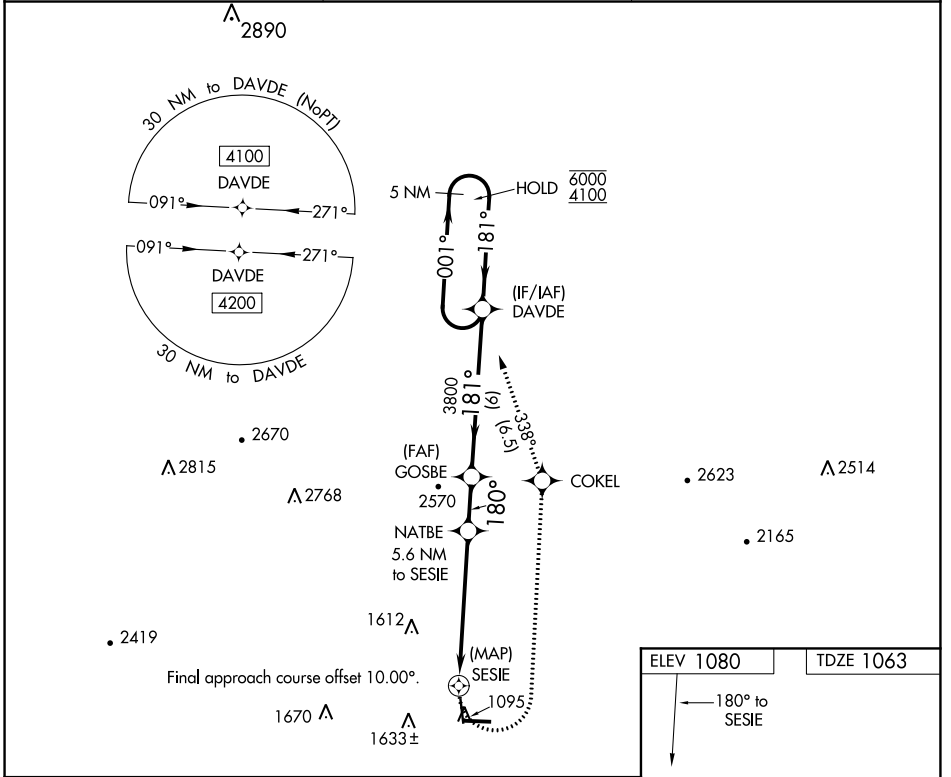
MENA INTERMOUNTAIN MUNI (MEZ)

RNP APCH.

▼ Circling Rwy 35 NA at night.  
 ▲ Rwy 17 helicopter visibility reduction below ¼ SM NA.

MISSED APPROACH: Climbing left turn to 4100 direct COKEI and track 338° to DAVDE and hold.

AWOS-3 <b>118.025</b>	MEMPHIS CENTER <b>126.1 269.0</b>	UNICOM <b>122.8 (CTAF) 0</b>
--------------------------	--------------------------------------	---------------------------------



ELEV 1080	TDZE 1063
-----------	-----------

180° to SESIE

0.5% UP

MIRL Rwy 9-27 and 17-35  
REIL Rwy 9, 27 and 35

CATEGORY	A	B	C	D
LNVA MDA	1660-1	597 (600-1)	1660-1¼ 597 (600-1¼)	NA
CIRCLING	1840-1 760 (800-1)	2140-1½ 1060 (1100-1½)	2220-3 1140 (1200-3)	NA

SC-1, 08 SEP 2022 to 06 OCT 2022

SC-1, 08 SEP 2022 to 06 OCT 2022