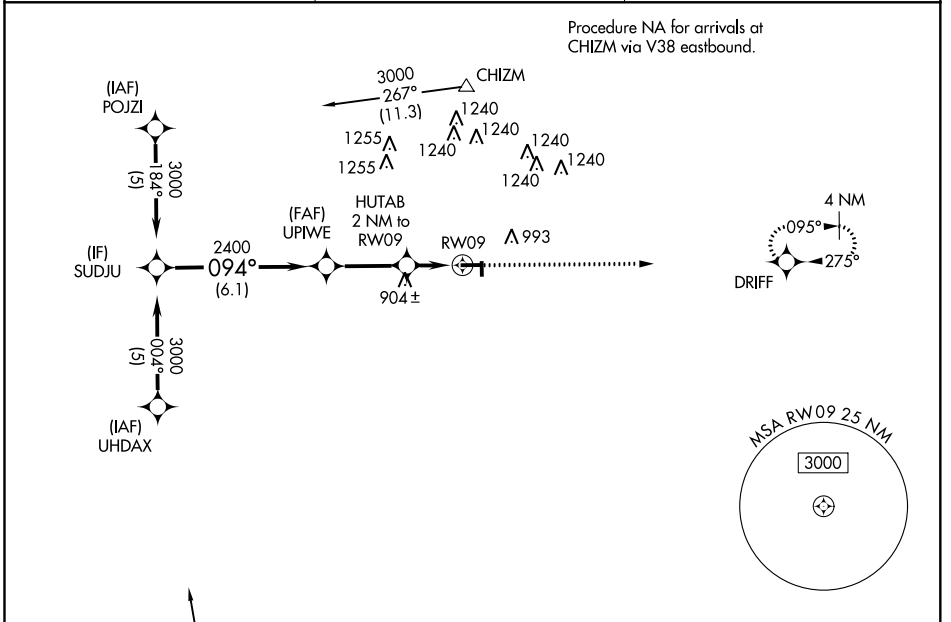


| | | |
|-------------|----------|-------------|
| APP CRS | Rwy Idg | 4000 |
| 094° | TDZE | 784 |
| | Apt Elev | 785 |

RNAV (GPS) RWY 9

VAN WERT COUNTY (VNW)

| | | |
|--|--|--|
| <p>▼ DME/DME RNP-0.3 NA. When local altimeter setting not received, use Fort Wayne altimeter setting and increase all MDA 80 feet and increase LNAV Cat C and D visibility ¼ mile and Circling Cat C visibility ¼ mile. VDP NA when using Fort Wayne altimeter setting.</p> | <p>MISSED APPROACH: Climb to 3000 direct DRIFT and hold.</p> | |
| | <p>AWOS-3 125.175</p> | <p>FORT WAYNE APP CON 127.2 284.6</p> |



| | | | |
|----------|--------|-------------|-------------------------|
| ELEV | 785 | TDZE | 784 |
| | | | |
| CATEGORY | A | B | D |
| LNAV MDA | 1160-1 | 376 (400-1) | 1160-1¼ 376 (400-1¼) |
| CIRCLING | 1340-1 | 555 (600-1) | 1340-2 555 (600-2) |

MIRL Rwy 9-27 0
REIL Rwy 9 and 27 0

EC-2, 08 SEP 2022 to 06 OCT 2022

EC-2, 08 SEP 2022 to 06 OCT 2022