

WAAS CH 56221 W33A	APP CRS 331°	Rwy Idg TDZE Apt Elev	5500 217 236
--	------------------------	-----------------------------	---

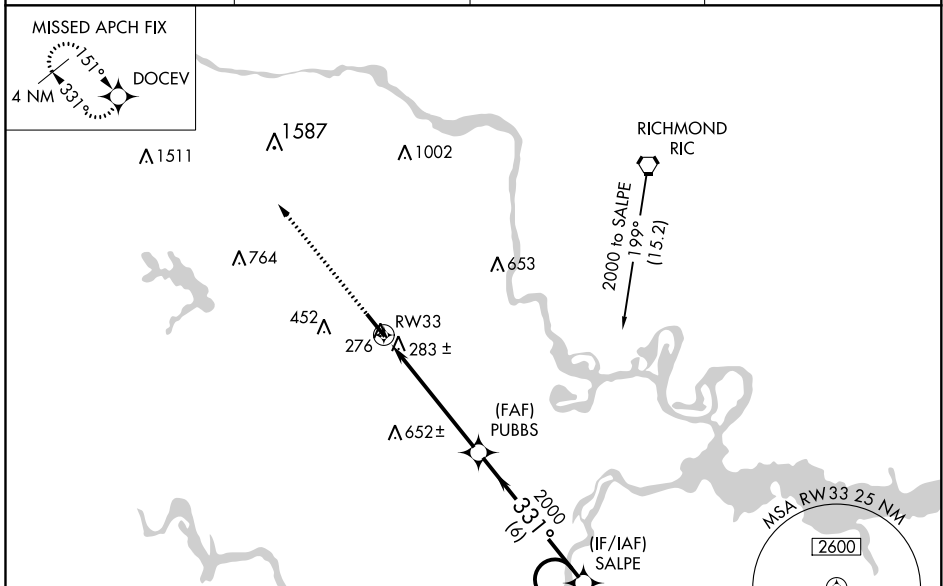
RNAV (GPS) RWY 33

RICHMOND EXEC/CHESTERFIELD COUNTY (F'CI)

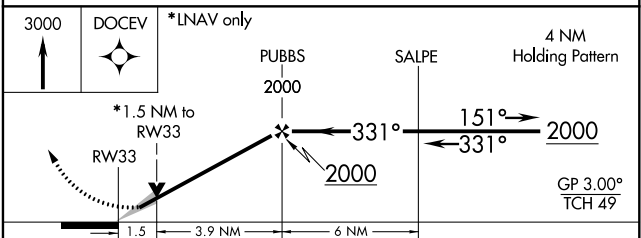
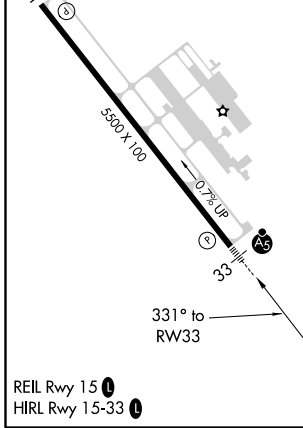
▼ For uncompensated Baro-VNAV systems, LNAV/VNAV NA below -1.5°C (5°F) or above 54°C (130°F). When local altimeter setting not received, use Richmond Intl altimeter setting; increase LPV DA to 546 feet and all visibilities ½ SM; increase LNAV/VNAV DA to 634 feet and all visibilities ½ SM; increase all MDAs 40 feet and LNAV visibility Cat C/D ½ SM and Circling visibility Cat D ½ SM. DME/DME RNP-0.3 NA. For inop MALS, increase LPV all Cats visibility to 1 mile and LNAV Cat C/D to 1½ mile. For inop MALS when using Richmond Intl altimeter setting, increase LPV all Cats visibility to 1½ mile. Baro-VNAV and VDP NA when using Richmond Intl altimeter setting.

MALS
● MISSED APPROACH:
Climb to 3000 direct
DOCEV and hold.

AWOS-3PT 128.625	POTOMAC APP CON 126.75 307.2	CLNC DEL 124.6	UNICOM 123.05 (CTAF)
----------------------------	--	--------------------------	--------------------------------



ELEV 236	TDZE 217
----------	----------



CATEGORY	A	B	C	D
LPV DA	510-½ 293 (300-½)			
LNAV/VNAV DA	598-⅞ 381 (400-⅞)			
LNAV MDA	720-½ 503 (500-½)	720-1 503 (500-1)		
CIRCLING	720-1 484 (500-1)	760-1 524 (600-1)	760-1½ 524 (600-1½)	1020-2½ 784 (800-2½)

RNAV (GPS) RWY 33

NE-3, 08 SEP 2022 to 06 OCT 2022

NE-3, 08 SEP 2022 to 06 OCT 2022