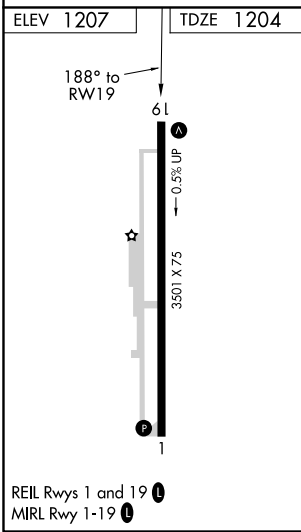
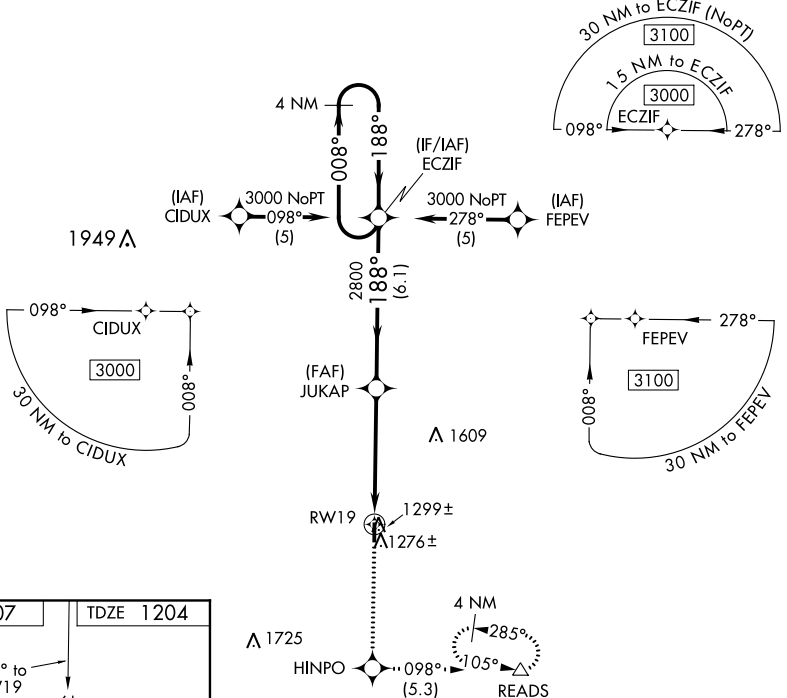


APP CRS	Rwy Idg	<b>3501</b>
<b>188°</b>	TDZE	<b>1204</b>
	Apt Elev	<b>1207</b>

# RNAV (GPS) RWY 19

ASHLAND COUNTY (3G4)

RNP APCH.		MISSED APPROACH: Climb to 3000 direct HINPO and left turn on track 098° to READS and hold.
▼ Rwy 19 helicopter visibility reduction below 1 SM NA. ▲ NA Procedure NA at night. Use Mansfield altimeter setting, when not received use Wooster altimeter setting.		
MFD ASOS <b>125.3</b>	CLEVELAND APP CON ★ <b>124.2 360.65</b>	UNICOM <b>122.7 (CTAF)</b>



3000	HINPO	READS	VGSI and descent angles not coincident (VGSI Angle 3.00/TCH 20).	4 NM Holding Pattern
↑	◆	↖ 098°	△	
CATEGORY	A	B	C	D
LNAV MDA	1600-1	396 (400-1)	1600-1 $\frac{1}{8}$ 396 (400-1 $\frac{1}{8}$ )	NA
CIRCLING	1660-1	453 (500-1)	1740-1 $\frac{1}{2}$ 533 (600-1 $\frac{1}{2}$ )	NA

EC-2, 08 SEP 2022 to 06 OCT 2022

EC-2, 08 SEP 2022 to 06 OCT 2022