

WAAS CH <b>99707</b> <b>W36A</b>	APP CRS <b>005°</b>	Rwy Idg TDZE Apt Elev	<b>5003</b> <b>979</b> <b>979</b>
--	------------------------	-----------------------------	---

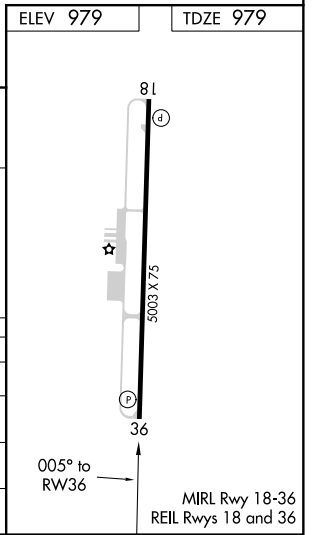
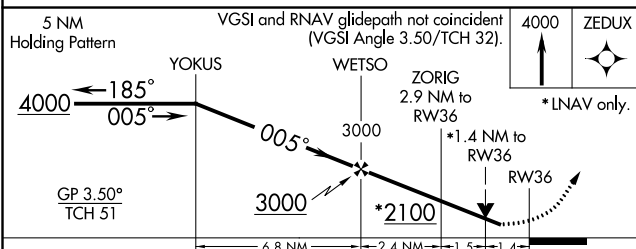
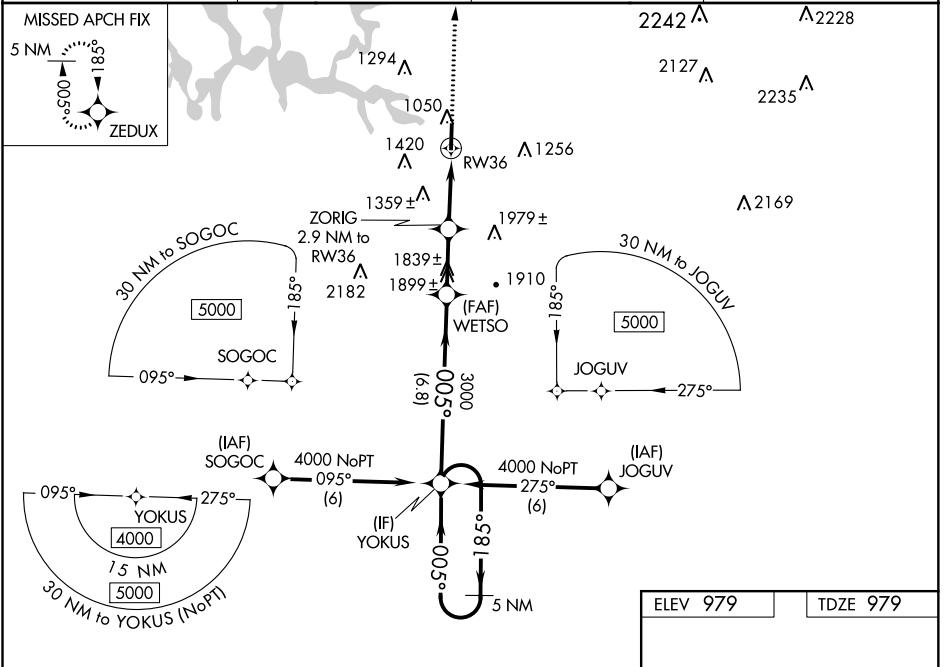
# RNAV (GPS) RWY 36

WINCHESTER MUNI (BGF)

**NA** DME/DME RNP-0.3 NA. For uncompensated Baro-VNAV systems, LNAV/VNAV NA below -16° C (4°F) or above 54° C (130°F). Baro-VNAV and LNAV NA when using Chattanooga altimeter setting. When local altimeter setting not received, use Chattanooga altimeter setting and increase LPV DA to 1483 feet, LNAV/VNAV DA to 1510 feet, and all MDAs 160 feet; increase LPV and LNAV/VNAV all Cats and Circling Cats B/C visibility 1/2 SM. VDP NA when using Chattanooga altimeter setting. Rwy 36 helicopter visibility reduction below 3/4 SM NA.

**MISSED APPROACH:** Climb to 4000 direct ZEDUX and hold.

<b>AWOS-3</b> <b>121.675</b>	<b>MEMPHIS CENTER</b> <b>128.15 323.125</b>	<b>GCO</b> <b>121.725</b>	<b>UNICOM</b> <b>122.8 (CTAF)</b>
---------------------------------	--	------------------------------	--------------------------------------



CATEGORY	A	B	C	D
LPV DA	1340-1	361 (400-1)		NA
LNAV/VNAV DA	1367-1 1/4	388 (400-1 1/4)		NA
LNAV MDA	1540-1	561 (600-1)	1540-1 5/8 561 (600-1 5/8)	NA
CIRCLING	1540-1 561 (600-1)	1780-1 801 (900-1)	1820-2 1/2 841 (900-2 1/2)	NA

SE-1, 08 SEP 2022 to 06 OCT 2022

SE-1, 08 SEP 2022 to 06 OCT 2022