

WAAS CH <b>78428</b> <b>W08A</b>	APP CRS <b>080°</b>	Rwy Idg TDZE Apt Elev	<b>4601</b> <b>831</b> <b>836</b>
--	------------------------	-----------------------------	---

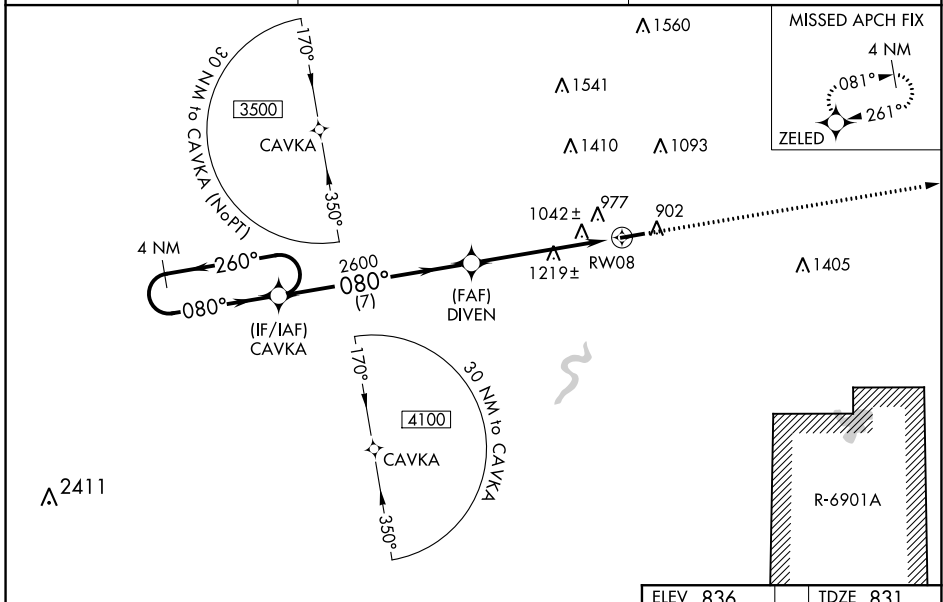
# RNAV (GPS) RWY 8

BLACK RIVER FALLS AREA (BCK)

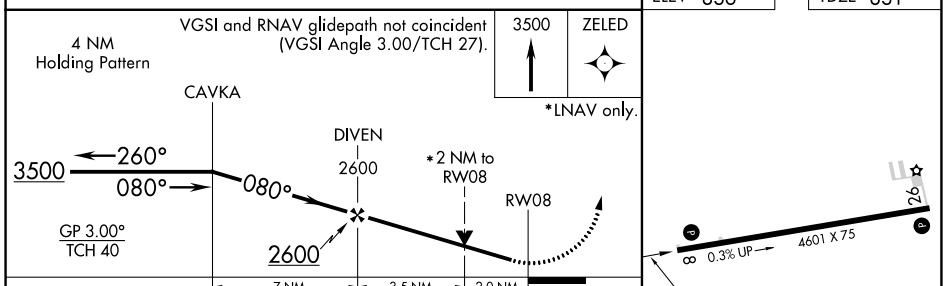
**⚠** Baro-VNAV NA when using La Crosse altimeter setting. For uncompensated Baro-VNAV systems, LNAV/VNAV NA below -16°C (4°F) or above 38° C (100°F). DME/DME RNP-0.3 NA. Visibility reduction by helicopters NA. VDP NA with La Crosse altimeter setting. When local altimeter setting not received, use La Crosse altimeter setting: increase LPV DA to 1172 feet and visibility all Cats ¼ SM; increase LNAV/VNAV DA to 1441 feet and visibility all Cats ½ SM; increase all MDA 100 feet and visibility LNAV Cat B ¼ SM, Cat C and D ½ SM and Circling Cat C ¼ SM.

**MISSED APPROACH:**  
Climb to 3500 direct ZELED and hold.

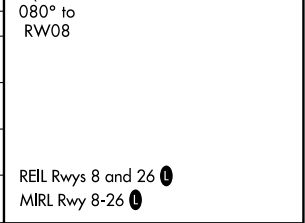
AWOS-3PT <b>119.125</b>	MINNEAPOLIS CENTER <b>128.6 363.0</b>	CTAF <b>122.9</b>
----------------------------	--	----------------------



ELEV 836	TDZE 831
----------	----------



CATEGORY	A	B	C	D
LPV DA	1081-7/8		250 (300-7/8)	
LNAV/VNAV DA	1350-13/4		519 (600-13/4)	
LNAV MDA	1480-1	649 (700-1)		1480-17/8 649 (700-17/8)
CIRCLING	1480-1	644 (700-1)		1520-2 684 (700-2) 1760-3 924 (1000-3)



EC-3, 08 SEP 2022 to 06 OCT 2022

EC-3, 08 SEP 2022 to 06 OCT 2022