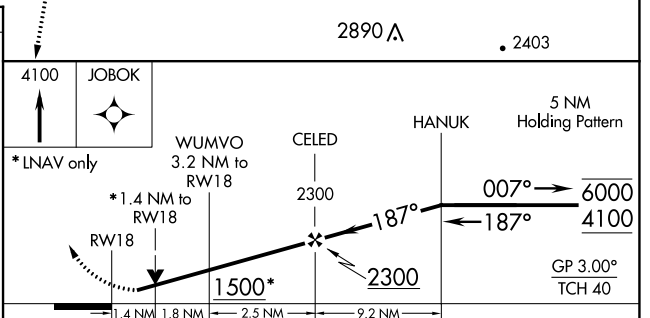
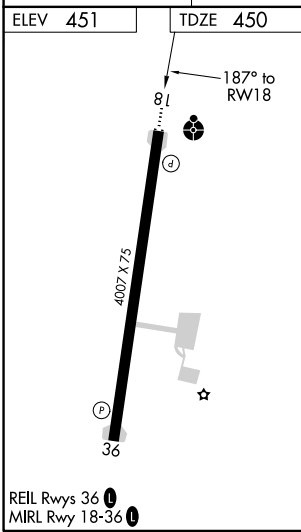
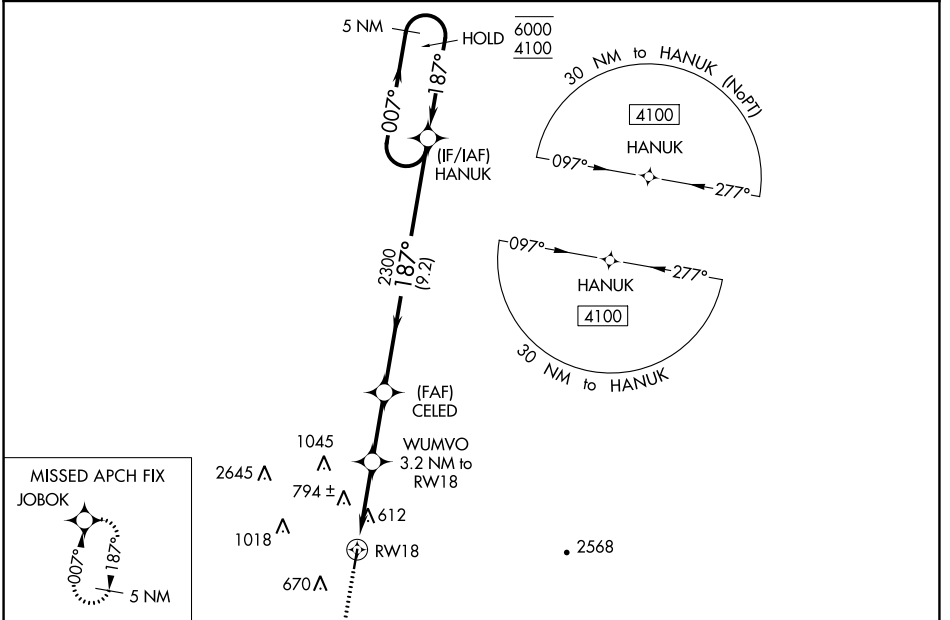


WAAS CH 56443 W18A	APP CRS 187°	Rwy Idg TDZE 450 Apt Elev 451	4007
--	------------------------	---	-------------

RNAV (GPS) RWY 18

ROBERT S KERR (RKR)

RNP APCH.	ODALS	MISSED APPROACH: Climb to 4100 direct JOBOK and hold, continue climb-in-hold to 4100.
<p>▼ Rwy 18 helicopter visibility reduction below 3/4 SM NA. For uncompensated Baro-VNAV systems, LNAV/VNAV NA below -15°C or above 54°C. ▲ Circling NA for Cats C and D west of Rwy 18-36.</p>		
AWOS-3 120.625	RAZORBACK APP CON * 120.9 343.75	UNICOM 122.8 (CTAF) 0



CATEGORY	A	B	C	D
LPV DA		700-1	250 (300-1)	
LNAV/VNAV DA		926-1 3/8	476 (500-1 3/8)	
LNAV MDA	940-1	490 (500-1)	940-1 3/8	490 (500-1 3/8)
CIRCLING	1000-1 549 (600-1)	1100-1 649 (700-1)	1100-1 3/4 649 (700-1 3/4)	1160-2 1/4 709 (800-2 1/4)

SC-1, 08 SEP 2022 to 06 OCT 2022

SC-1, 08 SEP 2022 to 06 OCT 2022