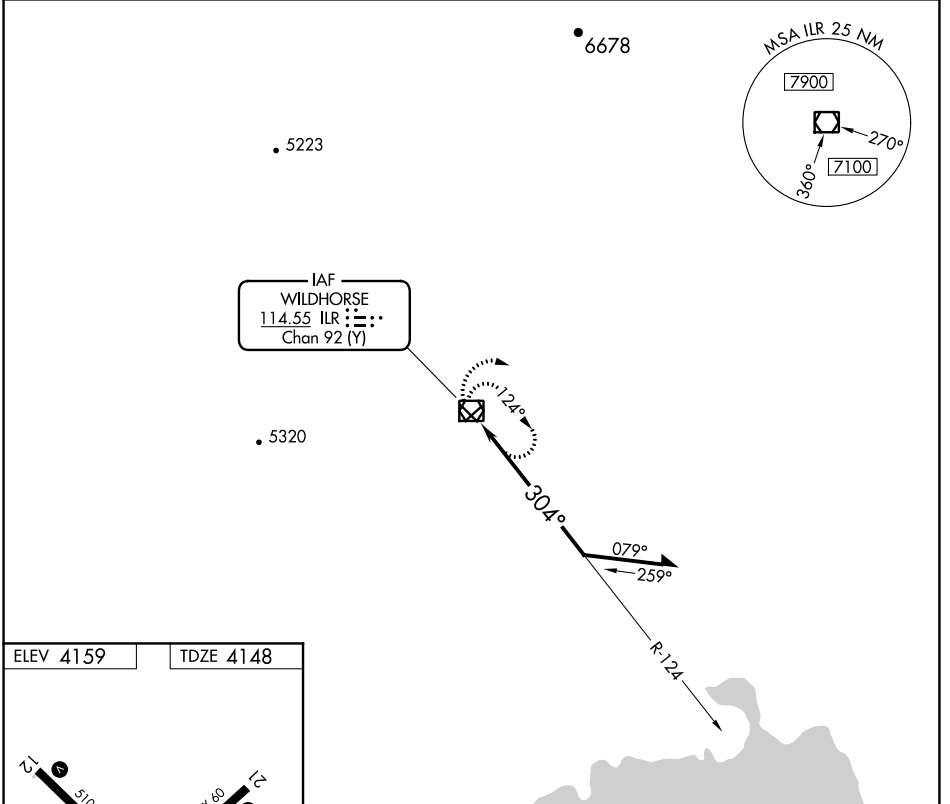


VOR/DME ILR 114.55 Chan 92 (Y)	APP CRS 304°	Rwy Idg 5100 TDZE 4148 Apt Elev 4159
--	------------------------	---

VOR RWY 30
BURNS MUNI (BNO)

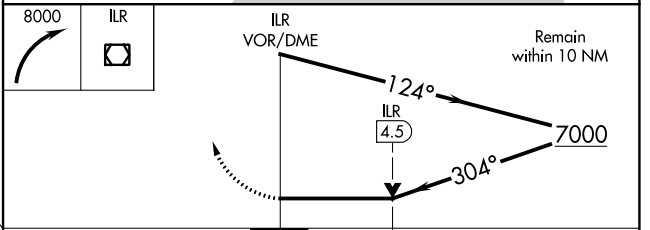
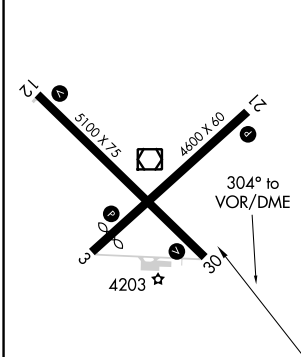
⚠ MISSED APPROACH: Climbing right turn to 8000 in ILR VOR/DME holding pattern.

ASOS 135.575	SALT LAKE CENTER 128.05 306.95	UNICOM 122.8 (CTAF)
------------------------	--	-------------------------------



IAF
WILDHORSE
114.55 ILR
Chan 92 (Y)

ELEV 4159	TDZE 4148
-----------	-----------



CATEGORY	A	B	C	D
S-30	5500-1¼ 1352 (1400-1¼)	5500-1½ 1352 (1400-1½)	5500-3	1352 (1400-3)
CIRCLING	5500-1¼ 1341 (1400-1¼)	5500-1½ 1341 (1400-1½)	5500-3	1341 (1400-3)

REIL Rwy 3, 12, 21 and 30
MIRL Rwy 3-21 and 12-30

NW-1, 08 SEP 2022 to 06 OCT 2022

NW-1, 08 SEP 2022 to 06 OCT 2022