

SWABR ONE DEPARTURE (RNAV)

SC-2, 08 SEP 2022 to 06 OCT 2022

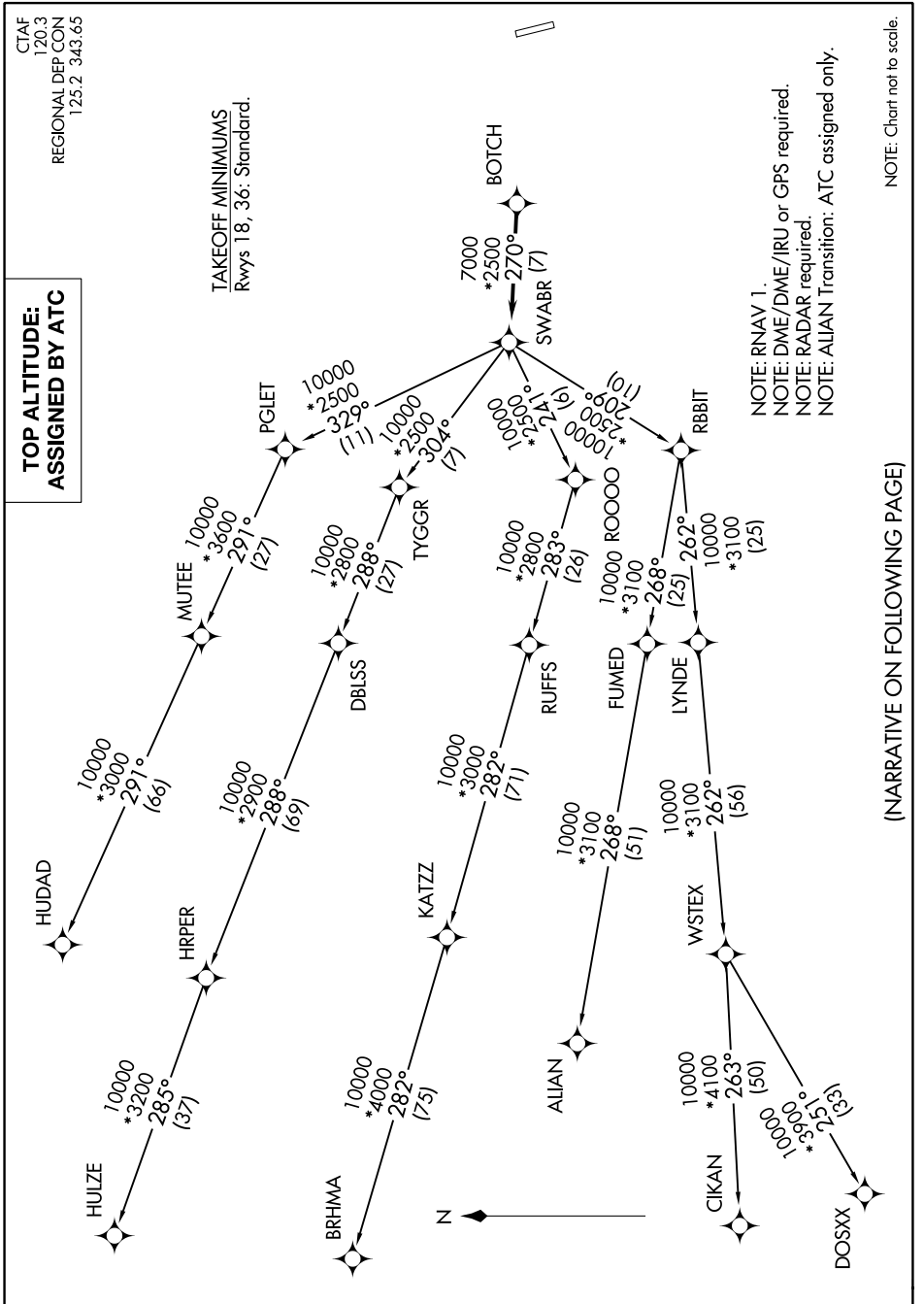
CTAF
120.3
REGIONAL DEP CON
125.2 343.65

**TOP ALTITUDE:
ASSIGNED BY ATC**

TAKEOFF MINIMUMS
Rwys 18, 36: Standard.

NOTE: RNAV 1.
NOTE: DME/DME/IRU or GPS required.
NOTE: RADAR required.
NOTE: ALIAN Transition: ATC assigned only.

NOTE: Chart not to scale.



(NARRATIVE ON FOLLOWING PAGE)

SC-2, 08 SEP 2022 to 06 OCT 2022

SWABR ONE DEPARTURE (RNAV)