

# HOODO SEVEN DEPARTURE (RNAV)

SC-5, 08 SEP 2022 to 06 OCT 2022

ASOS  
118.525  
CLNC DEL  
124.0  
CTAF  
122.725  
HOUSTON DEP CON  
134.45 284.0

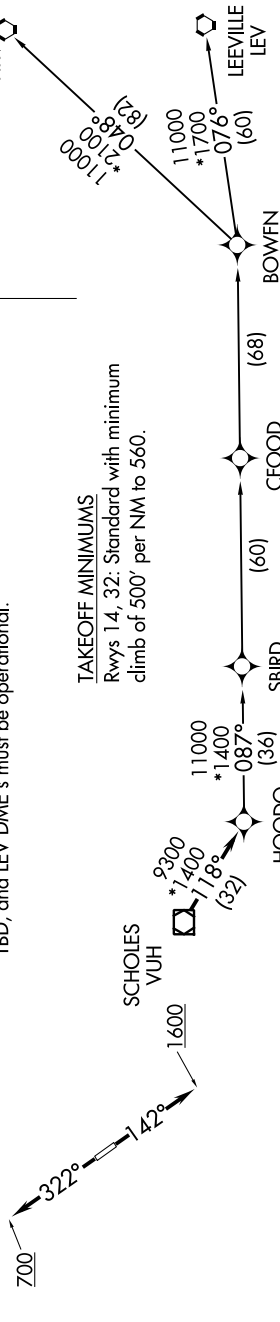
NOTE: RNAV 1.

NOTE: RADAR required.

NOTE: ATC assigned only.

NOTE: DME/DME/IRU or GPS required.

NOTE: For non-GPS equipped aircraft, LCH, ILA, TBD, and LEV DME's must be operational.



### TAKEOFF MINIMUMS

Rwys 14, 32: Standard with minimum climb of 500' per NM to 560.

### TOP ALTITUDE: ASSIGNED BY ATC

NOTE: Chart not to scale.

### DEPARTURE ROUTE DESCRIPTION

TAKEOFF RUNWAY 14: Climb on heading 142° to 1600, for RADAR vectors to VUH VOR/DME, thence . . . .

TAKEOFF RUNWAY 32: Climb on heading 322° to 700, for RADAR vectors to VUH VOR/DME, thence . . . .

. . . . on track 118° to HOODO, then on (transition). Maintain ATC assigned altitude. Expect filed altitude 10 minutes after departure.

- BOWFN TRANSITION (HOODO7.BOWFN)
- CFOOD TRANSITION (HOODO7.CFOOD)
- HARVEY TRANSITION (HOODO7.HRV)
- LEEVILLE TRANSITION (HOODO7.LEV)
- SBIRD TRANSITION (HOODO7.SBIRD)

SC-5, 08 SEP 2022 to 06 OCT 2022