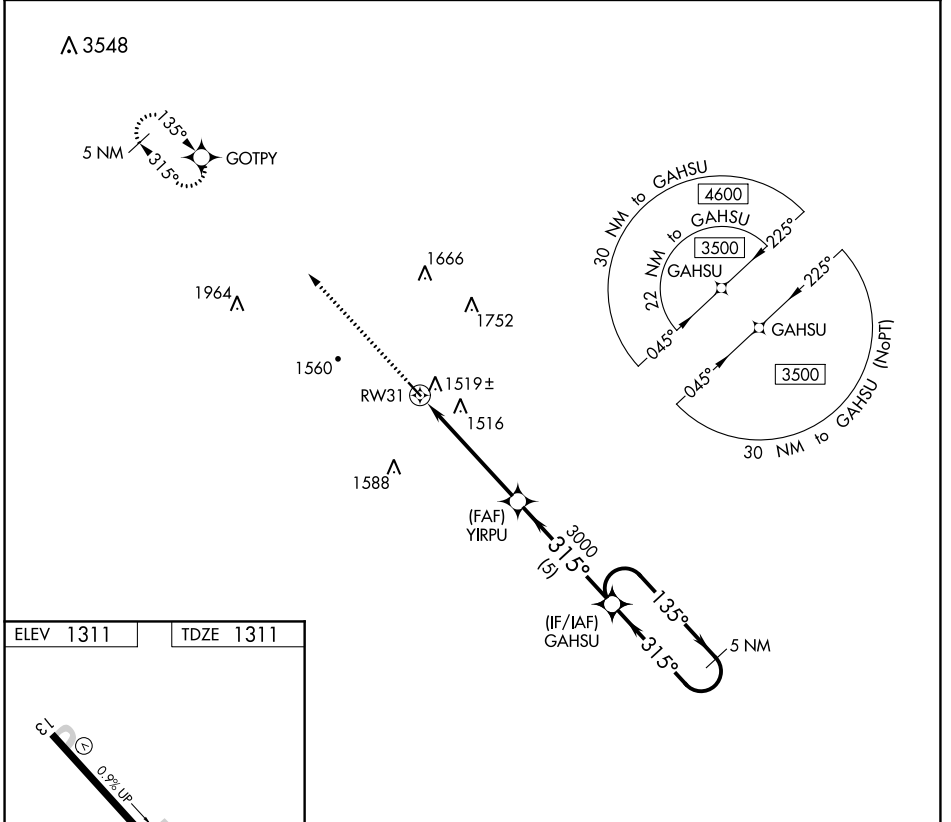


APP CRS <b>315°</b>	Rwy Idg TDZE Apt Elev	<b>3634</b> <b>1311</b> <b>1311</b>
------------------------	-----------------------------	---

# RNAV (GPS) RWY 31

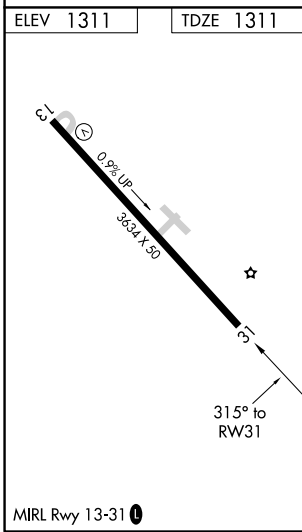
AVA BILL MARTIN MEML (AOV)

RNP APCH.		MISSED APPROACH: Climb to 4600 direct GOTPY and hold, continue climb-in-hold to 4600.
<p>Procedure NA at night. Rwy 31 helicopter visibility reduction below 1 SM NA. Use Branson altimeter setting, if not received use Springfield Branson Natl altimeter setting and increase all MDA 20 feet.</p>		
BBG AWOS-3 <b>124.625</b>	SPRINGFIELD APP CON <b>126.35</b>	UNICOM <b>122.7 (CTAF) 0</b>



NC-3, 08 SEP 2022 to 06 OCT 2022

NC-3, 08 SEP 2022 to 06 OCT 2022



4600	GOTPY	Visual Segment - Obstacles.		GAHSU	5 NM Holding Pattern
↑	⊛	YIRPU			
RW31		3000		3500	
		5.2 NM	5 NM		
CATEGORY	A	B	C	D	
LNAV MDA	1860-1	549 (600-1)			NA