

WAAS CH 86428 W21A	APP CRS 211°	Rwy Idg 5003 TDZE 470 Apt Elev 473
--	------------------------	---

RNAV (GPS) RWY 21

FLORA MUNI (F.O.A.)

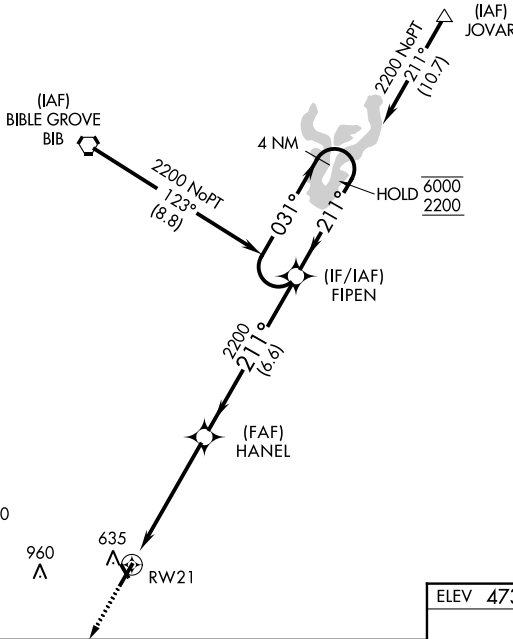
RNP APCH.

⚠ Circling NA to Rwy's 15 and 33. Baro-VNAV and VDP NA when using Olney-Noble altimeter setting.
 ⚠ For uncompensated Baro-VNAV systems, LNAV/VNAV NA below -17°C or above 54°C. Rwy 21 helicopter visibility reduction below 3/4 SM NA. When local altimeter setting not received, use Olney-Noble altimeter setting and increase LPV DA to 779 feet, LNAV/VNAV DA to 838 feet and increase LNAV/VNAV visibility all Cats 1/8 SM, increase all MDA 40 feet.

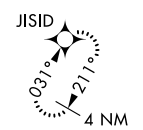
MISSED APPROACH:
Climb to 2200 direct JISID and hold.

AWOS-3 120.175	KANSAS CITY CENTER 127.7 351.825	UNICOM 122.7 (CTAF) 0
--------------------------	--	---------------------------------

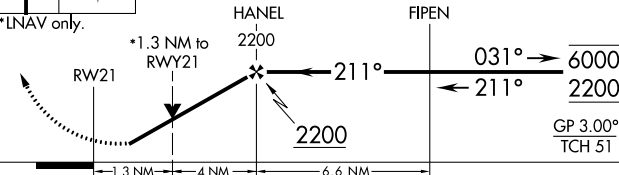
Procedure NA for arrival on BIB VORTAC airway radials 078 CW 204.



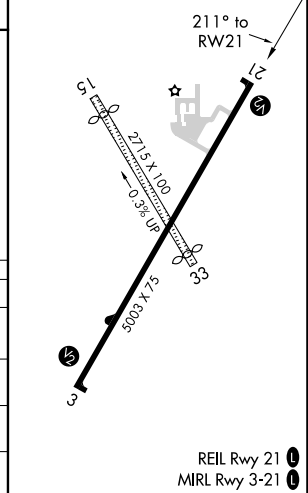
MISSED APCH FIX



2200 JISID VGSJ and RNAV glidepath not coincident (VGSJ Angle 3.00/TCH 25). 4 NM Holding Pattern



ELEV 473	TDZE 470
----------	----------



CATEGORY	A	B	C	D
LPV DA		746-1 276 (300-1)		NA
LNAV/VNAV DA		805-1 335 (400-1)		NA
LNAV MDA	920-1 450 (500-1)		920-1 3/8 450 (500-1 3/8)	NA
CIRCLING	940-1 467 (500-1)		1160-2 687 (700-2)	NA

EC-3, 08 SEP 2022 to 06 OCT 2022

EC-3, 08 SEP 2022 to 06 OCT 2022