

WAAS CH 40024 W34A	APP CRS 341°	Rwy Idg TDZE Apt Elev	3402 108 113
--	------------------------	-----------------------------	---

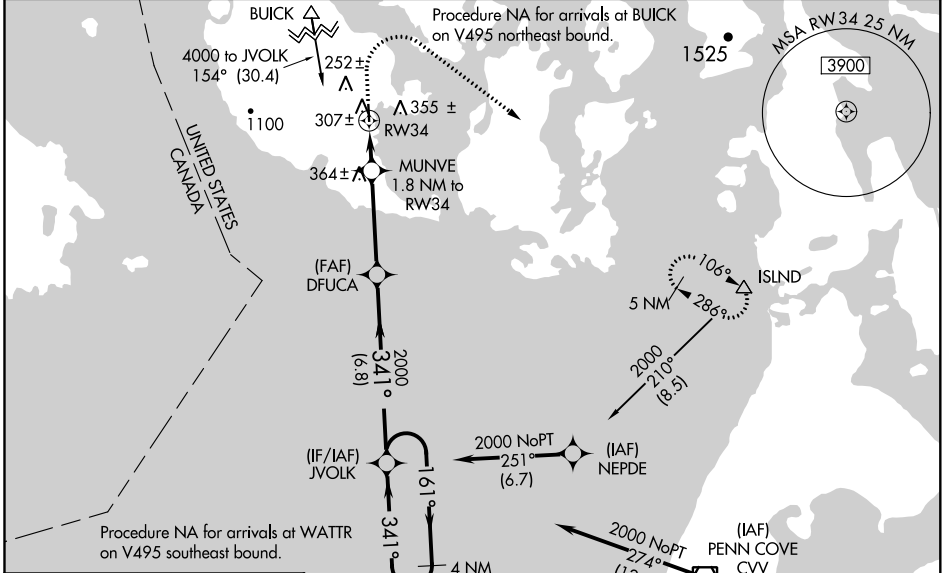
RNAV (GPS) RWY 34

FRIDAY HARBOR (FHR)

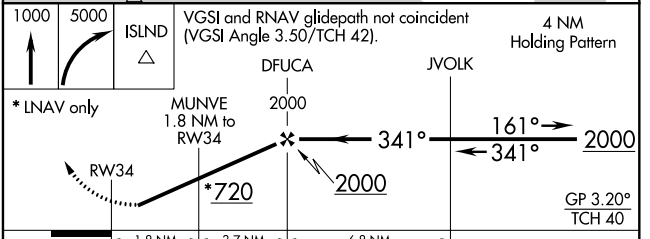
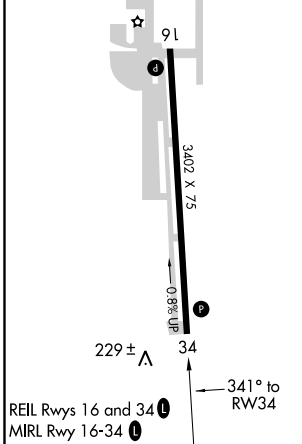
▼ When VGSI inop, Circling Rwy 16 NA at night. Baro-VNAV NA when using Burlington/Mount Vernon altimeter setting. For uncompensated Baro-VNAV systems, LNAV/VNAV NA below -15°C (5°F) or above 43°C (109°F). When VGSI inop, Straight-in/Circling Rwy 34 procedure NA at night. Circling NA west of Rwy 16-34. DME/DME RNP-0.3 NA. Helicopter visibility reduction below 1 SM NA. When local altimeter setting not received, use Burlington/Mount Vernon altimeter setting; increase all DA 61 feet and all MDA 80 feet; increase LPV visibility all Cats ¼ mile, LNAV/VNAV visibility all Cats ¼ mile, LNAV visibility Cat C ¼ mile, and Circling visibility Cat C ¼ mile.

▲ MISSED APPROACH: Climb to 1000, then climbing right turn to 5000 direct ISLND and hold, continue climb-in-hold to 5000.

ASOS 135.675	WHIDBEY APP CON 118.2 285.65	CTAF 128.25
------------------------	--	-----------------------



ELEV 113	TDZE 108
-----------------	-----------------



CATEGORY	A			B		C		D	
	1	2	3	1	2	1	2	1	2
LPV DA	467-1½		359 (400-1½)				NA		
LNAV/VNAV DA	513-1¼		405 (400-1¼)				NA		
LNAV MDA	620-1		512 (600-1)		620-1½		512 (600-1½)		
CIRCLING	720-1		820-1		840-2		727 (800-2)		
	607 (700-1)		707 (800-1)				NA		

NW-1, 08 SEP 2022 to 06 OCT 2022

NW-1, 08 SEP 2022 to 06 OCT 2022