

APP CRS	Rwy Idg	<b>3998</b>
<b>028°</b>	TDZE	<b>268</b>
	Apt Elev	<b>270</b>

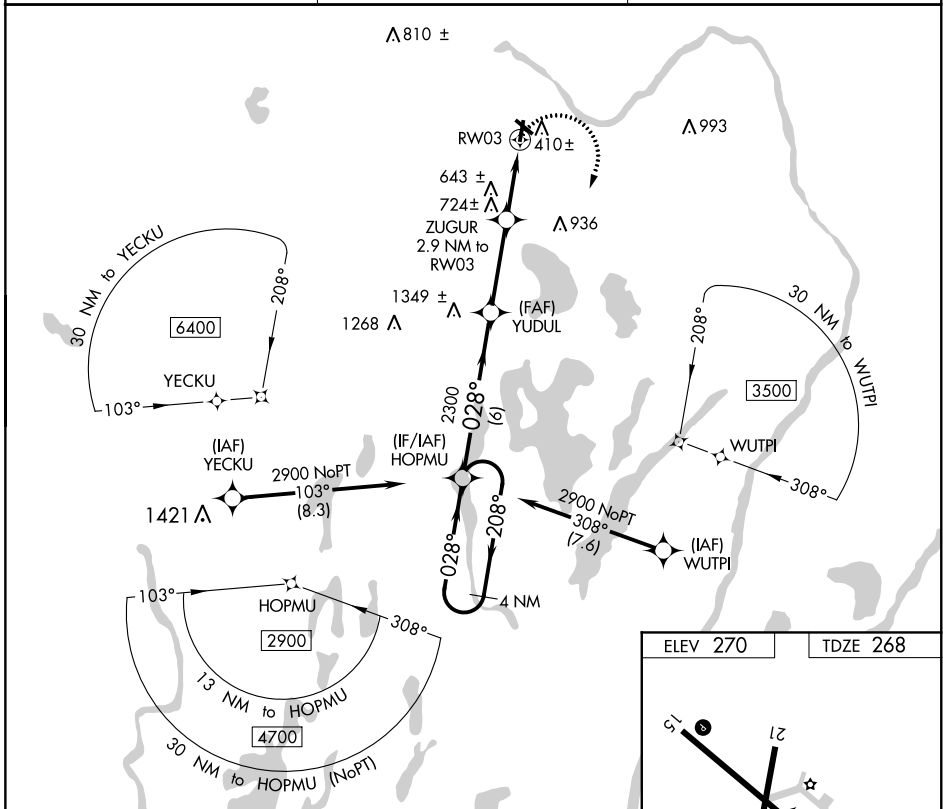
# RNAV (GPS) RWY 3

CENTRAL MAINE/NORRIDGEWOCK (OWK)

**▽** DME/DME RNP-0.3 NA. When local altimeter setting not received, use Augusta State altimeter setting and increase all MDA 80 feet; increase LNAV Cat B visibility ¼ mile and Cat C visibility ½ mile and Circling Cat B visibility ¼ mile and Cat C visibility ½ mile.  
**▲ NA** Procedure NA at night. Helicopter visibility reduction below 1 SM NA.

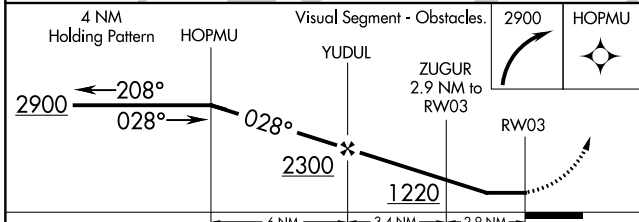
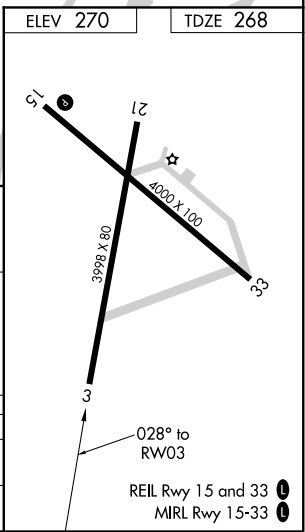
**MISSED APPROACH:** Climbing right turn to 2900 direct HOPMU and hold.

<b>AWOS-AV</b> <b>123.075</b>	<b>PORTLAND APP CON</b> ★ <b>128.35 299.2</b>	<b>UNICOM</b> <b>122.8 (CTAF)</b> <b>0</b>
----------------------------------	--	---



NE-1, 08 SEP 2022 to 06 OCT 2022

NE-1, 08 SEP 2022 to 06 OCT 2022



CATEGORY	A	B	C	D
LNAV MDA	980-1	712 (800-1)	980-2 712 (800-2)	NA
<b>C</b> CIRCLING	980-1	710 (800-1)	1080-2 ¼ 810 (900-2 ¼)	NA