

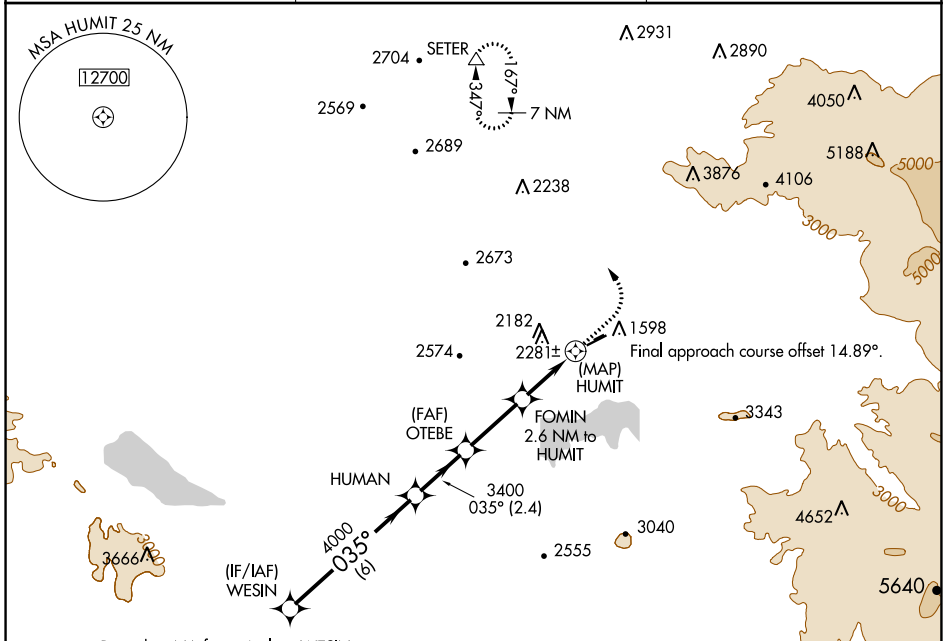
APP CRS **035°**  
 Rwy Idg **4315**  
 TDZE **1513**  
 Apt Elev **1515**

# RNAV (GPS) RWY 5

HEMET-RYAN (HMT)

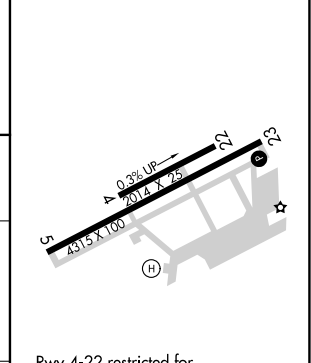
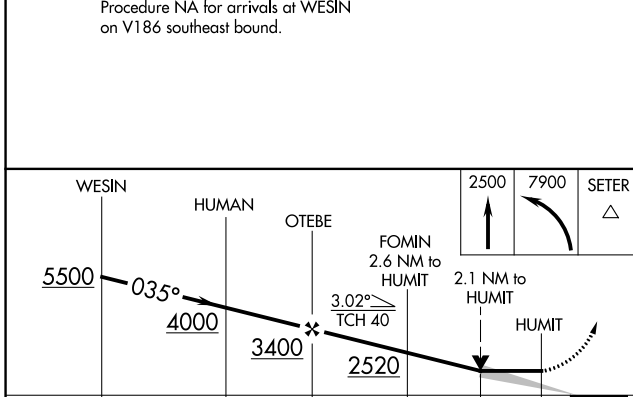
RNP APCH  
 MISSED APPROACH: Climb to 2500 then climbing left turn to 7900 direct SETER and hold, continue climb-in-hold to 7900.

AWOS-3PT **118.375**      MARCH APP CON \* **133.5 306.975**      UNICOM **123.0 (CTAF)**



Procedure NA for arrivals at WESIN on V186 southeast bound.

ELEV 1515      TDZE 1513



CATEGORY	A	B	C	D
LNVA MDA	2360-1 847 (900-1)	2360-1½ 847 (900-1½)	2360-2½ 847 (900-2½)	NA
CIRCLING	2620-1½ 1105 (1200-1½)	2620-1½ 1105 (1200-1½)	2880-3 1365 (1400-3)	NA

Rwy 4-22 restricted for glider operations.  
 MRL Rwy 5-23

SW-3, 08 SEP 2022 to 06 OCT 2022

SW-3, 08 SEP 2022 to 06 OCT 2022