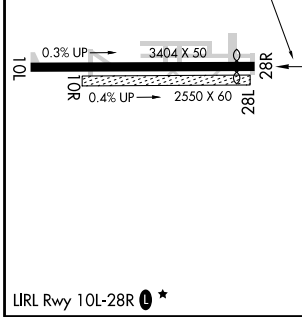
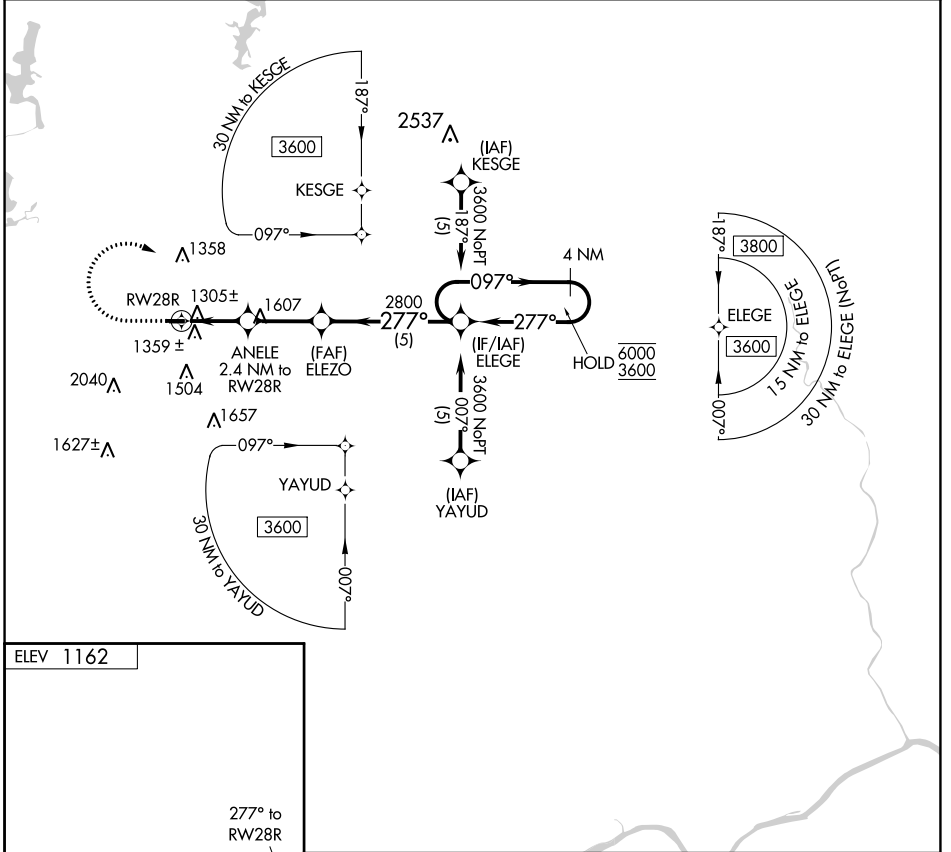


APP CRS 277°	Rwy Idg TDZE Apt Elev N/A N/A 1162
------------------------	--

RNAV (GPS)-A
SALEM AIRPARK INC (38D)

RNP APCH - GPS.	MISSED APPROACH: Climb to 1600 then climbing right turn to 3600 direct ELEGE and hold.
-----------------	--

YNG ASOS 123.75	CLEVELAND APP CON * 125.5 371.875	UNICOM 122.7 (CTAF) 0
---------------------------	---	---------------------------------



	1600	3600	ELEGE	ELEZO ANELE 2.4 NM to RW28R RW28R 2.4 NM 2.6 NM 5 NM ELEGE 4 NM Holding Pattern ELEZO 277° 097° 277° 6000 3600 TCH 40 ≤ 3.00°
	CATEGORY A B C D			
LIRL Rwy 10L-28R 0 *		CIRCLING 1780-1 618 (700-1) NA		

EC-2, 08 SEP 2022 to 06 OCT 2022

EC-2, 08 SEP 2022 to 06 OCT 2022