

WAAS CH 40440 W01A	APP CRS 007°	Rwy Idg 6200 TDZE 1276 Apt Elev 1303
---------------------------------	------------------------	---

RNAV (GPS) RWY 1

WILKES COUNTY (UKF)

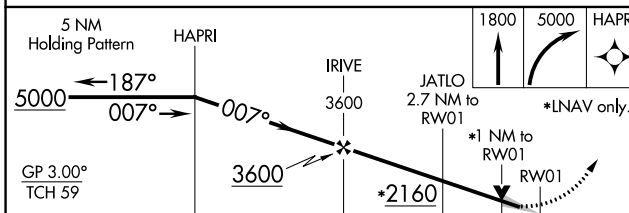
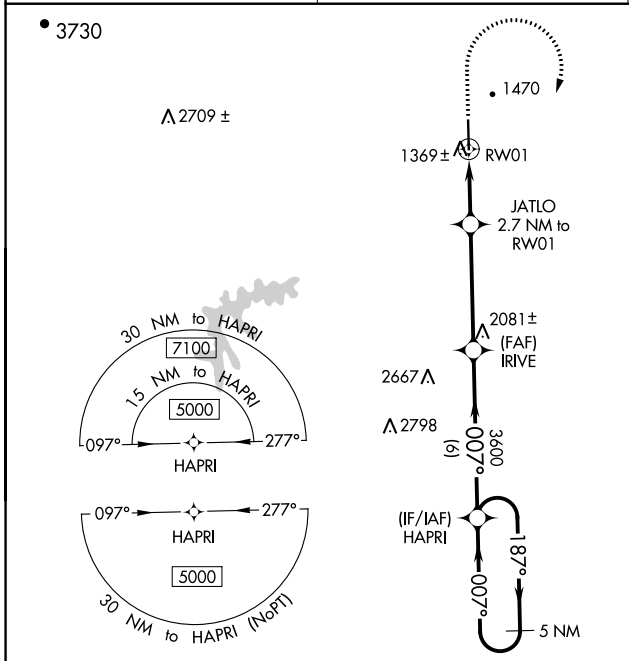
⚠ For uncompensated Baro-VNAV systems, LNAV/VNAV NA below -17°C (2°F) or above 54°C (130°F). DME/DME RNP-0.3 NA. When local altimeter setting not received, use Hickory altimeter setting and increase LPV DA to 1566 feet and LNAV/VNAV DA to 1669 feet and LNAV/VNAV visibility all Cats ¼ SM. Increase all MDAs 100 feet and LNAV visibility Cats C/D ¼ SM and Circling Cat C ½ SM. For inop ALS when using Hickory altimeter setting, increase LPV all Cats visibility to 1 SM. VDP and Baro-VNAV NA when using Hickory altimeter setting.

MALSRR
MISSED APPROACH: Climb to 1800 then climbing right turn to 5000 direct HAPRI and hold, continue climb-in-hold to 5000.

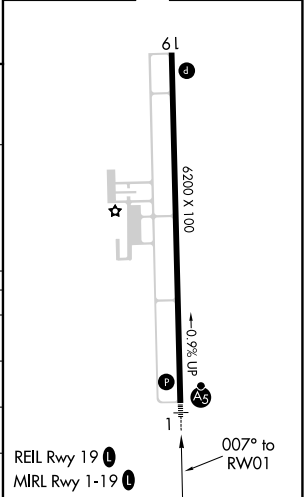
AWOS-3
126.625

ATLANTA CENTER
125.15 263.0

UNICOM
122.7 (CTAF)



ELEV 1303	TDZE 1276
-----------	-----------



CATEGORY	A	B	C	D
LPV DA		1476-½	200 (200-½)	
LNAV/VNAV DA		1579-⅝	303 (300-⅝)	
LNAV MDA	1620-½	344 (400-½)	1620-⅝	344 (400-⅝)
C CIRCLING	1800-1 497 (500-1)	1880-1 577 (600-1)	1880-1½ 577 (600-1½)	2240-3 937 (1000-3)

SE-2, 08 SEP 2022 to 06 OCT 2022

SE-2, 08 SEP 2022 to 06 OCT 2022