

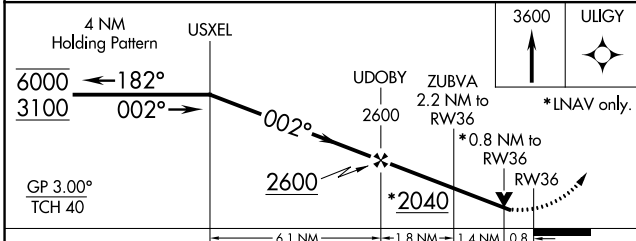
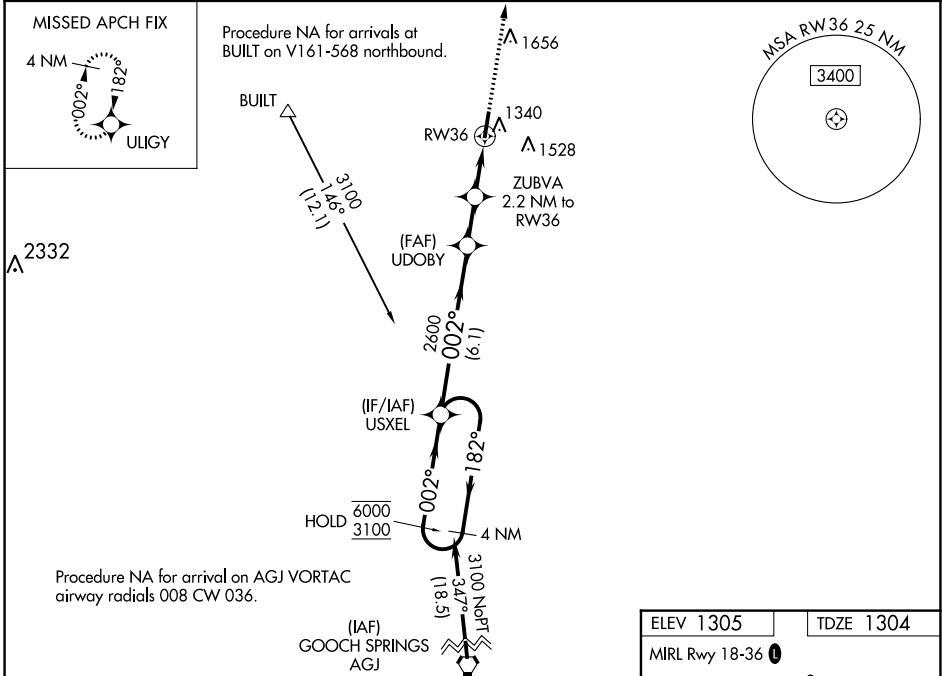
WAAS CH <b>50229</b> <b>W36A</b>	APP CRS <b>002°</b>	Rwy Idg TDZE <b>1304</b> Apt Elev <b>1305</b>
--	------------------------	---

# RNAV (GPS) RWY 36

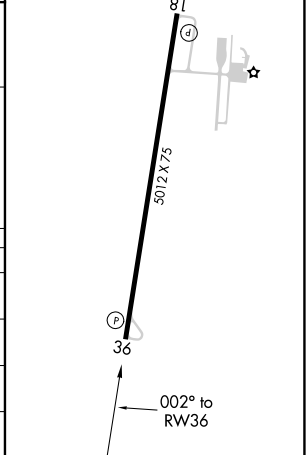
HAMILTON MUNI (MNZ)

RNP APCH-GPS. ▼ Rwy 36 helicopter visibility reduction below 3/4 SM NA. For uncompensated Baro-VNAV systems, LNAV/VNAV NA below -17°C or above 54°C.	MISSED APPROACH: Climb to 3600 direct ULIGY and hold.
--	---

AWOS-3PT <b>118.525</b>	GRAY APP CON <b>120.075 323.15</b>	UNICOM <b>122.7 (CTAF) 0</b>
----------------------------	---------------------------------------	---------------------------------



ELEV 1305	TDZE 1304
MIRL Rwy 18-36 0	



CATEGORY	A	B	C	D
LPV DA		1554-1	250 (300-1)	NA
LNAV/VNAV DA		1554-1	250 (300-1)	NA
LNAV MDA		1600-1	296 (300-1)	NA
CIRCLING	1680-1 375 (400-1)	1840-1 535 (600-1)	1960-1 3/4 655 (700-1 3/4)	NA

SC-3, 08 SEP 2022 to 06 OCT 2022

SC-3, 08 SEP 2022 to 06 OCT 2022