

WAAS CH 69643 W16A	APP CRS 166°	Rwy Idg TDZE Apt Elev	7025 6188 6221
--	------------------------	-----------------------------	---

RNAV (GPS) RWY 16

AFTON MUNI (AFO)

RNP APCH - GPS.

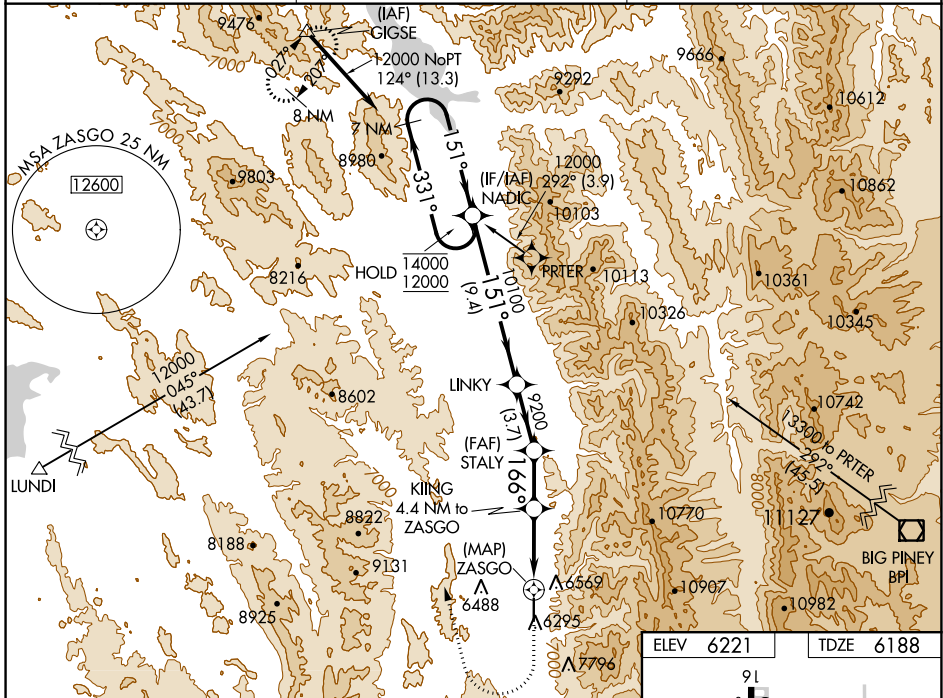
▼ Rwy 16 helicopter visibility reduction below $\frac{3}{4}$ SM NA. When Afton altimeter setting not received, procedure NA.

▲ MISSED APPROACH: (Do not exceed 210K until GIGSE) Climb to 7400 then climbing right turn to 13300 direct GIGSE and hold.

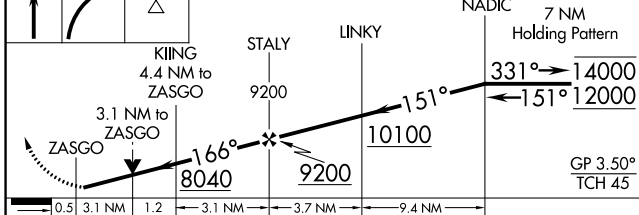
⊘ #Missed approach requires minimum climb of 420 feet per NM to 9000.

***** Missed approach requires minimum climb of 400 feet per NM to 9000.

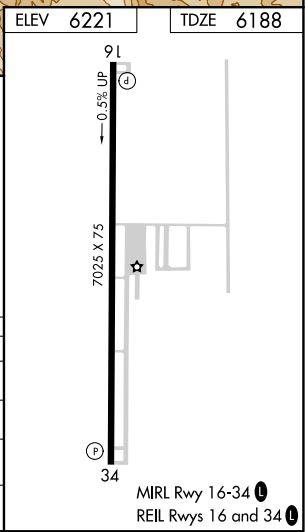
AWOS-3P 119.025	SALT LAKE CENTER 128.35 239.25	UNICOM 122.8 (CTAF)
---------------------------	--	-------------------------------



7400 13300 GIGSE VGSi and RNAV glidepath not coincident (VGSi Angle 3.50/TCH 52).



CATEGORY	A	B	C	D
LPV DA*	6485-1 297 (300-1)			NA
LPV DA	7110-2½ 922 (900-2½)			NA
LNAV MDA#	7600-1¼ 1412 (1400-1¼)	7600-1½ 1412 (1400-1½)	7600-3 1412 (1400-3)	NA
LNAV MDA	7800-1¼ 1612 (1600-1¼)	7800-1½ 1612 (1600-1½)	7800-3 1612 (1600-3)	NA



NW-1, 08 SEP 2022 to 06 OCT 2022

NW-1, 08 SEP 2022 to 06 OCT 2022