

WAAS CH <b>56639</b> <b>W11A</b>	APP CRS <b>114°</b>	Rwy ldg <b>2713</b> TDZE <b>15</b> Apt Elev <b>15</b>
--	------------------------	---

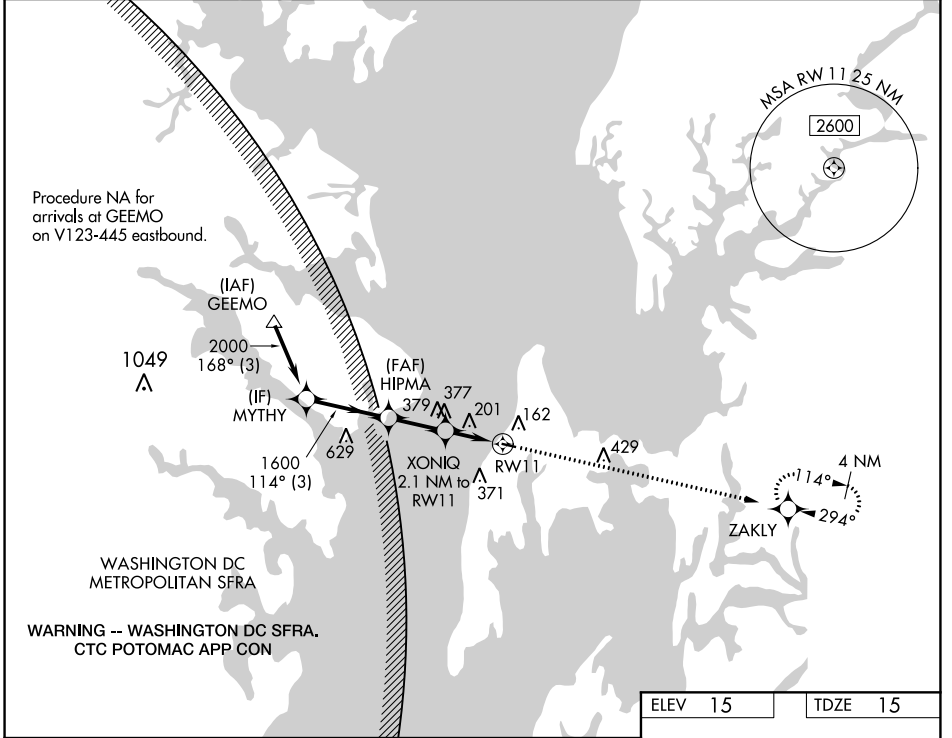
# RNAV (GPS) RWY 11

BAY BRIDGE (W29)

RNP APCH. MISSED APPROACH: Climb to 2100 direct ZAKLY and hold.

For uncompensated Baro-VNAV systems, LNAV/VNAV NA below -15°C or above 54°C.

AWOS-3 <b>120.575</b>	POTOMAC APP CON <b>119.0 282.275</b>	UNICOM <b>122.725 (CTAF) 0</b>
--------------------------	---	-----------------------------------



NE-3, 08 SEP 2022 to 06 OCT 2022

NE-3, 08 SEP 2022 to 06 OCT 2022

ELEV 15		TDZE 15	
<p>VGSI and RNAV glidepath not coincident (VGSI Angle 3.00/TCH 39).</p> <p>2100 ZAKLY</p> <p>114° to RW11</p> <p>*LNAV only.</p> <p>0.3% UP</p> <p>2713 X 60</p> <p>29</p>			
GP 3.50° TCH 40	MYTHY 2000	HIPMA 1600	XONIQ 2.1 NM to RW11
	114°	*820	*1.3 NM to RW11
	3 NM	2.1 NM	0.8 NM
			1.3 NM
CATEGORY	A	B	C
LPV DA	265-1	250 (300-1)	NA
LNAV/VNAV DA	489-1 <sup>3</sup> / <sub>8</sub>	474 (500-1 <sup>3</sup> / <sub>8</sub> )	NA
LNAV MDA	460-1	445 (500-1)	NA
CIRCLING	500-1 485 (500-1)	800-1 785 (800-1)	NA
REIL Rwy 11 and 29 0		MIRL Rwy 11-29 0	