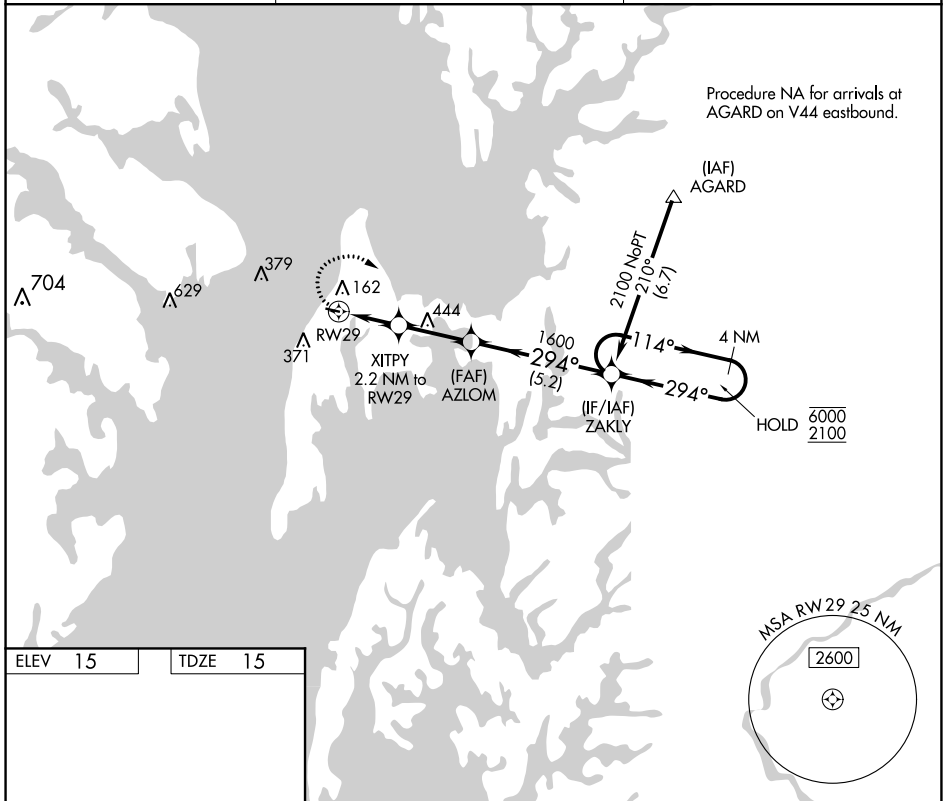


APP CRS	Rwy Idg	<b>2713</b>
<b>294°</b>	TDZE	<b>15</b>
	Apt Elev	<b>15</b>

# RNAV (GPS) RWY 29

BAY BRIDGE (W29)

RNP APCH.		MISSED APPROACH: Climbing right turn to 2100 direct ZAKLY and hold.
<p><b>▼</b> Rwy 29 helicopter visibility reduction below 1 SM NA.</p> <p><b>▲</b></p>		
AWOS-3 <b>120.575</b>	POTOMAC APP CON <b>119.0 282.275</b>	UNICOM <b>122.725 (CTAF) 0</b>



ELEV 15	TDZE 15
---------	---------

REIL Rws 11 and 29 **0**  
MIRL Rwy 11-29 **0**

2100	ZAKLY	Visual Segment - Obstacles.	ZAKLY	4 NM Holding Pattern
CATEGORY	A	B	C	D
LNAV MDA	480-1	465 (500-1)	NA	
<b>C</b> CIRCLING	500-1 485 (500-1)	800-1 785 (800-1)	NA	

NE-3, 08 SEP 2022 to 06 OCT 2022

NE-3, 08 SEP 2022 to 06 OCT 2022