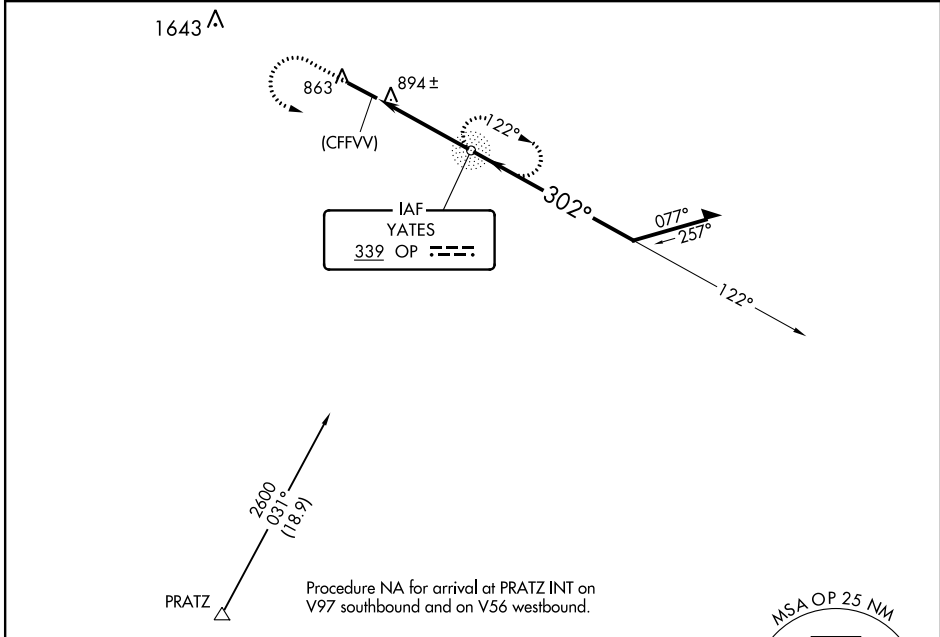


NDB OP 339	APP CRS 302°	Rwy Idg 4962
		TDZE 796
		Apt Elev 798

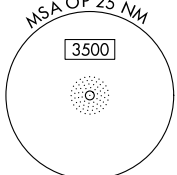
NDB RWY 30
THOMASTON-UPSON COUNTY (OPN)

<p>For inop ALS, increase S-30 Cats A, B visibility to 1 SM and Cats C, D to 1 1/8 SM.</p>	<p>MALS R</p>	<p>MISSED APPROACH: Climb to 1500 then climbing left turn to 2600 direct YATES NDB and hold, continue climb-in-hold to 2600.</p>

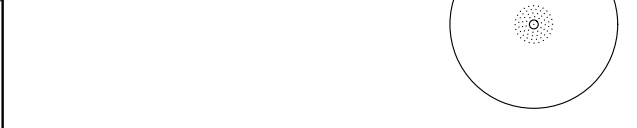
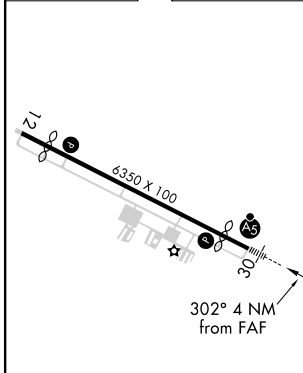
AWOS-3 133.975	ATLANTA APP CON ★ 124.2 279.6	UNICOM 122.8 (CTAF) 0
--------------------------	---	---------------------------------



Procedure NA for arrival at PRATZ INT on V97 southbound and on V56 westbound.



ELEV 798	D	TDZE 796
----------	----------	----------



1500 2600 OP

↑ ↶ ○

VGSI and descent angles not coincident (VGSI Angle 3.00/TCH 27).

(CFFVV)

3.19° TCH 40

4 NM

OP NDB

122°

2400

302°

2200

Remain within 10 NM

MIRL Rwy 12-30 0	FAF to MAP 4 NM				
Knots	60	90	120	150	180
Min:Sec	4:00	2:40	2:00	1:36	1:20
CATEGORY	A	B	C	D	
S-30	1200-3/4 404 (500-3/4)				
CIRCLING	1220-1 422 (500-1)	1260-1 462 (500-1)	1260-1 1/2 462 (500-1 1/2)	1680-3 882 (900-3)	

SE-4, 08 SEP 2022 to 06 OCT 2022

SE-4, 08 SEP 2022 to 06 OCT 2022