

| | | |
|-------------|----------|-------------|
| APP CRS | Rwy Idg | 3297 |
| 147° | TDZE | 1082 |
| | Apt Elev | 1082 |

RNAV (GPS) RWY 15

PINEY PINECREEK BORDER (48Y)

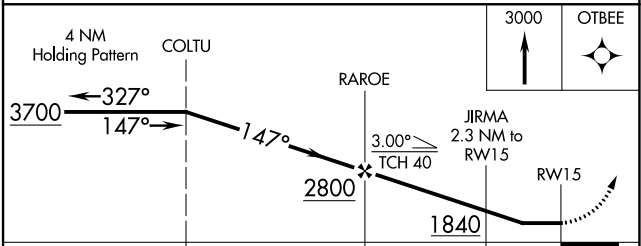
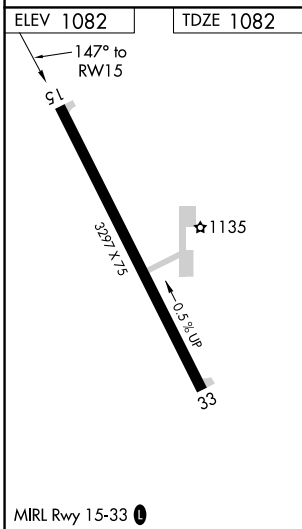
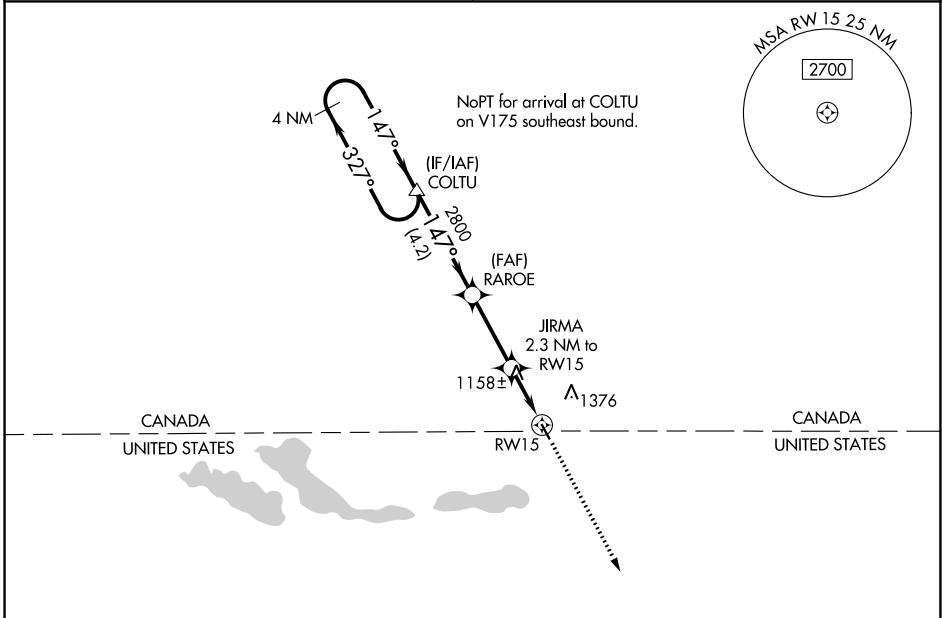
RNP APCH.

▽ Use Roseau altimeter setting; when not received, use Wroard altimeter setting and increase all MDA 40 feet.
△ NA Rwy 15 helicopter visibility reduction below 3/4 SM NA.

MISSED APPROACH: Climb to 3000 direct OTBEE and hold.

MINNEAPOLIS CENTER
134.75 251.1

UNICOM
122.8 (CTAF)



| | | | | |
|----------|--------|-------------|----|---|
| CATEGORY | A | B | C | D |
| LNAV MDA | 1460-1 | 378 (400-1) | NA | |

NC-1, 08 SEP 2022 to 06 OCT 2022

NC-1, 08 SEP 2022 to 06 OCT 2022