

APP CRS	Rwy Idg	N/A
047°	TDZE	N/A
	Apt Elev	730

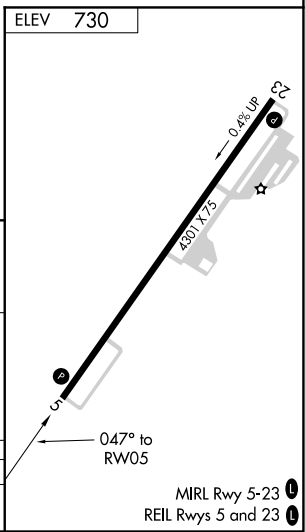
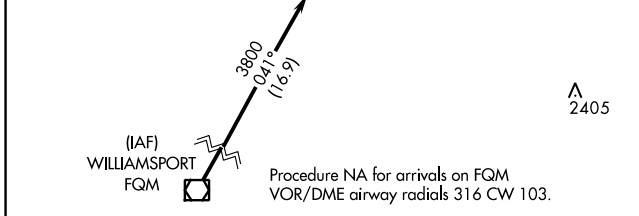
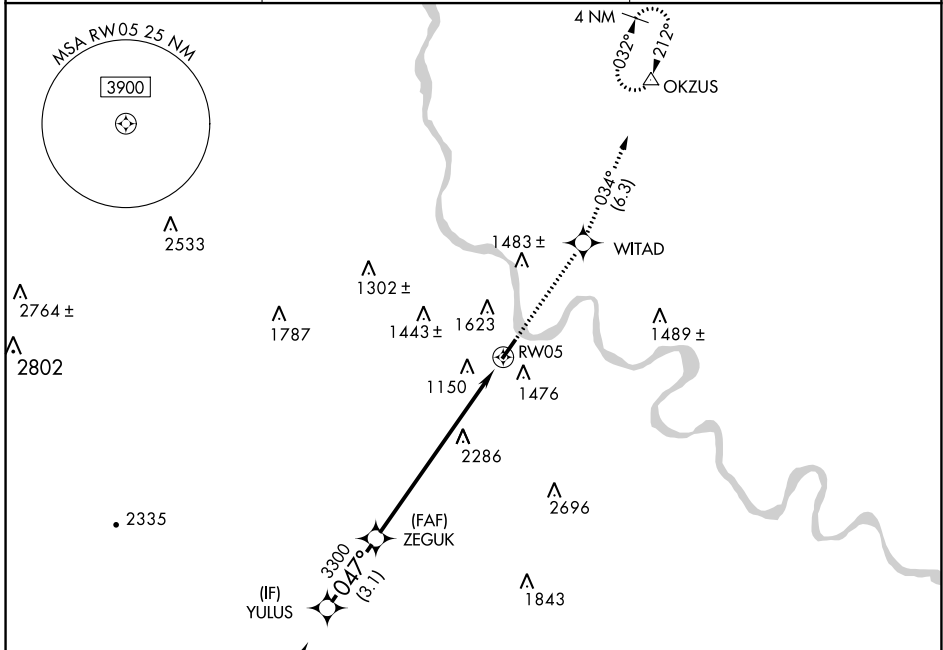
# RNAV (GPS)-A

BRADFORD COUNTY (N27)

**NA** DME/DME RNP-0.3 NA. Visibility reduction by helicopters NA. When local altimeter setting not received, use Elmira altimeter setting and increase all MDAs 40 feet. Procedure NA at night.

MISSED APPROACH: Climb to 3500 direct WITAD and on track 034° to OKZUS and hold.

AWOS-3 <b>119.925</b>	BINGHAMTON APP CON <b>118.6 257.625</b>	UNICOM <b>123.0 (CTAF) 0</b>
--------------------------	--	---------------------------------



YULUS	ZEGUK	tr	OKZUS
3800	3300	034°	△
3.1 NM	8 NM		

CATEGORY	A	B	C	D
CIRCLING	2760-1¼ 2030 (2100-1¼)	2760-1½ 2030 (2100-1½)	NA	

NE-4, 08 SEP 2022 to 06 OCT 2022

NE-4, 08 SEP 2022 to 06 OCT 2022

MIRL Rwy 5-23 0  
REIL Rwys 5 and 23 0