

WAAS CH 42822 W24A	APP CRS 247°	Rwy Idg TDZE Apt Elev	5500 665 665
--	------------------------	-----------------------------	---

RNAV (GPS) RWY 24

SANDUSKY COUNTY RGNL (S24)

RNP APCH.

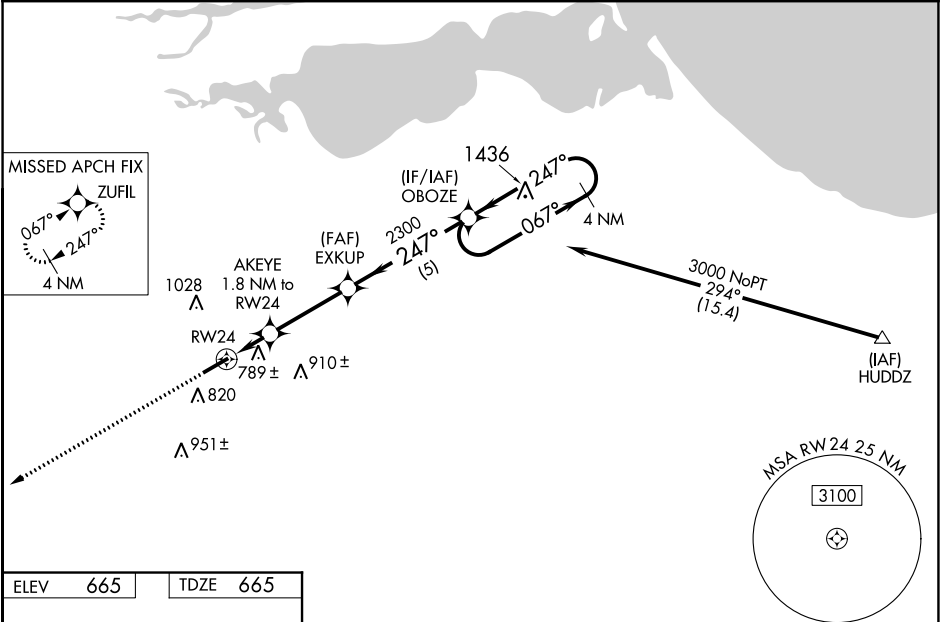
NA For uncompensated Baro-VNAV systems, LNAV/VNAV NA below -16°C (4°F) or above 54°C (130°F). Baro-VNAV and VDP NA when using Toledo Express altimeter setting. When local altimeter setting not received, use Toledo Express altimeter setting: increase LPV DA to 978 feet and all visibilities 3/8 SM; increase LNAV/VNAV DA to 1196 feet and all visibilities 3/8 SM; increase all MDA 100 feet and LNAV visibility Cat C and D 1/4 SM and Circling visibility Cat C and D 1/2 SM.

MISSED APPROACH:
Climb to 3000 direct ZUFIL and hold.

AWOS-3
119.575

TOLEDO APP CON
126.1 307.0

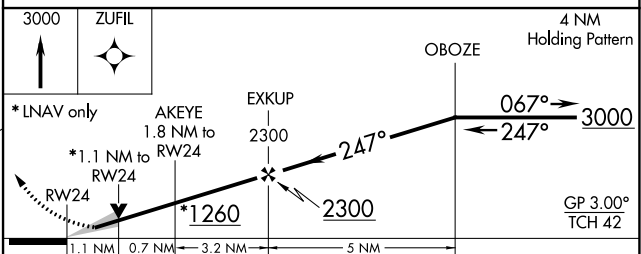
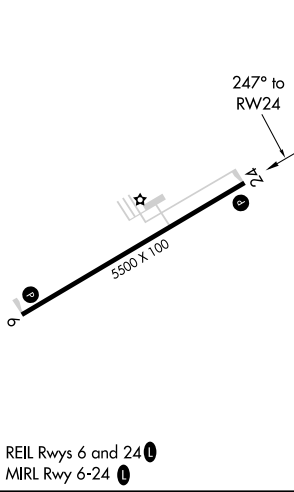
UNICOM
123.05 (CTAF) 0



EC-2, 08 SEP 2022 to 06 OCT 2022

EC-2, 08 SEP 2022 to 06 OCT 2022

ELEV	665	TDZE	665
------	-----	------	-----



CATEGORY	A	B	C	D
LPV DA		885-3/4	220 (300-3/4)	
LNAV/VNAV DA		1103-1 1/2	438 (500-1 1/2)	
LNAV MDA	1040-1	375 (400-1)	1040-1 1/8	375 (400-1 1/8)
C CIRCLING	1120-1 455 (500-1)	1160-1 495 (500-1)	1380-2 715 (800-2)	1380-2 1/4 715 (800-2 1/4)

FREMONT, OHIO
Amdt 1A 24MAY18

41°18'N - 83°02'W

RNAV (GPS) RWY 24