

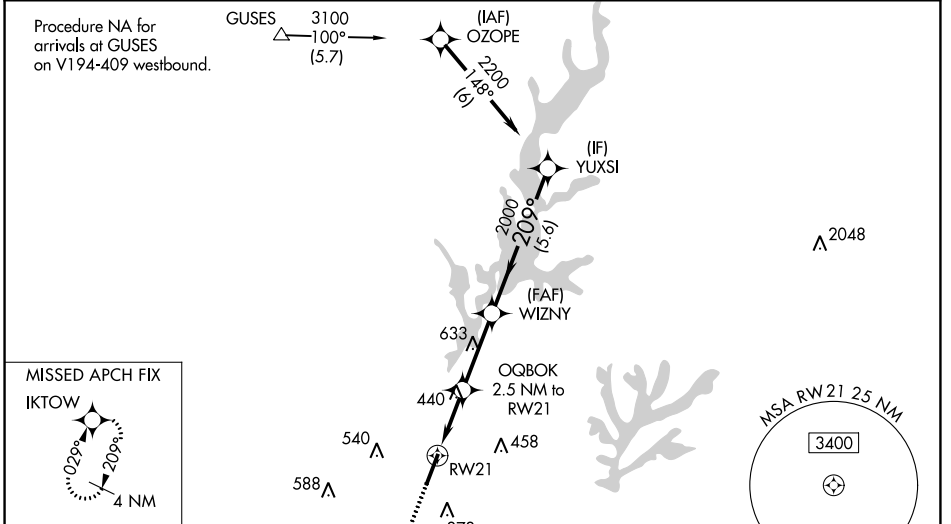
WAAS CH <b>86522</b> <b>W21A</b>	APP CRS <b>209°</b>	Rwy Idg TDZE Apt Elev	<b>6501</b> <b>230</b> <b>247</b>
--	------------------------	-----------------------------	---

# RNAV (GPS) RWY 21

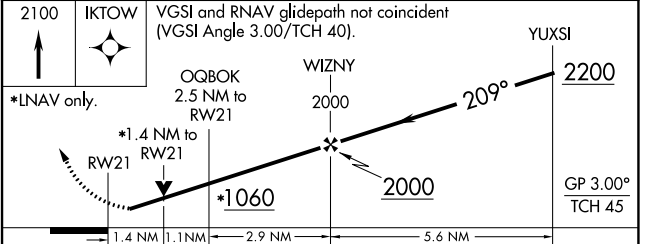
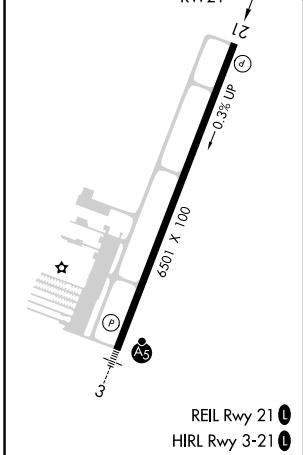
RALEIGH EXEC JETPORT AT SANFORD-LEE COUNTY (TTA)

RNP APCH.	<p>Baro-VNAV NA when using Raleigh/Durham altimeter setting. For uncompensated Baro-VNAV systems, LNAV/VNAV NA below -15°C or above 54°C. When local altimeter setting not received, use Raleigh/Durham altimeter setting and increase all DA 81 feet and all MDA 100 feet. Increase LPV all Cts visibility to 1¼ SM, LNAV/VNAV all Cts visibility to 1½ SM, LNAV Cts C and D visibility to 1½ SM, and Circling Cat C visibility to 2 SM and Cat D visibility to 2¾ SM. Rwy 21 helicopter visibility reduction below ¾ SM NA. VDP NA when using Raleigh/Durham altimeter setting.</p>	MISSED APPROACH: Climb to 2100 direct IKTOW and hold.
-----------	---	---

AWOS-3 <b>120.625</b>	RALEIGH APP CON <b>125.3 353.675</b>	UNICOM <b>123.075 (CTAF) 0</b>	GCO <b>135.075</b>
--------------------------	---	-----------------------------------	-----------------------



ELEV <b>247</b>	TDZE <b>230</b>
-----------------	-----------------



CATEGORY	A	B	C	D
LPV DA		530-1	300 (300-1)	
LNAV/VNAV DA		518-7/8	288 (300-7/8)	
LNAV MDA	700-1	470 (500-1)	700-1¾	470 (500-1¾)
<b>C</b> CIRCLING	760-1 513 (600-1)	820-1 573 (600-1)	840-1½ 593 (600-1½)	960-2¼ 713 (800-2¼)

SE-2, 08 SEP 2022 to 06 OCT 2022

SE-2, 08 SEP 2022 to 06 OCT 2022