

WAAS CH <b>86241</b> <b>W20A</b>	APP CRS <b>203°</b>	Rwy Idg TDZE Apt Elev	<b>4966</b> <b>776</b> <b>776</b>
--	------------------------	-----------------------------	---

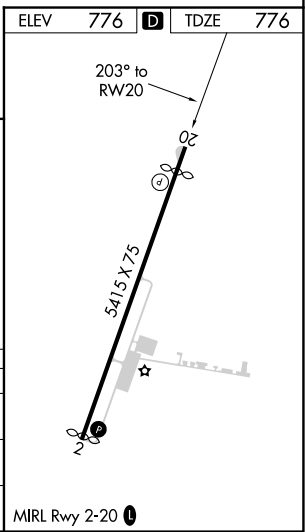
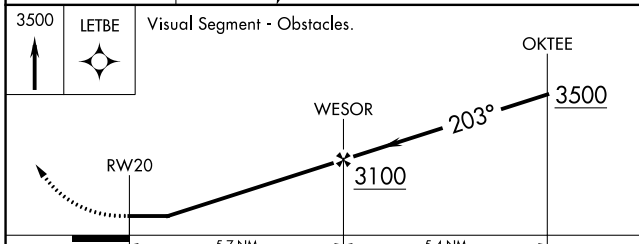
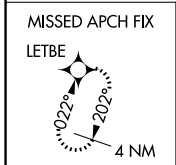
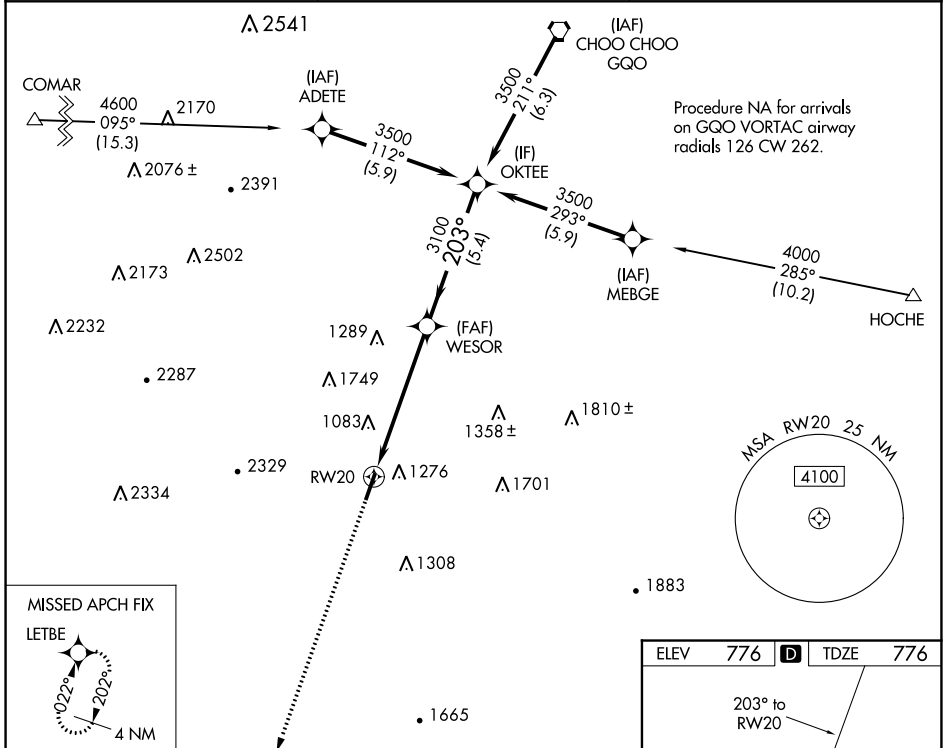
# RNAV (GPS) RWY 20

BARWICK LAFAYETTE (9A.5)

**⚠** DME/DME RNP-0.3 NA. Procedure NA at night.  
**⚠** Rwy 20 helicopter visibility reduction below 1 SM NA.  
 When local altimeter setting not received, use Chattanooga altimeter setting and increase all MDA 80 feet and increase Circling visibility 1/4 SM.

MISSED APPROACH: Climb to 3500 direct LETBE and hold.

AWOS-3 <b>119.775</b>	CHATTANOOGA APP CON ★ <b>125.1 379.1</b>	UNICOM <b>122.8 (CTAF) 0</b>
--------------------------	---	---------------------------------



CATEGORY	A	B	C	D
LP MDA	1440-1 664 (700-1)		NA	
LNAV MDA	1600-1 824 (900-1)		NA	
<b>C</b> CIRCLING	1660-1 884 (900-1)		NA	

SE-4, 08 SEP 2022 to 06 OCT 2022

SE-4, 08 SEP 2022 to 06 OCT 2022