

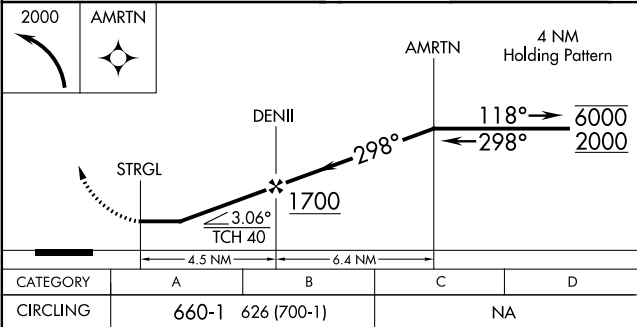
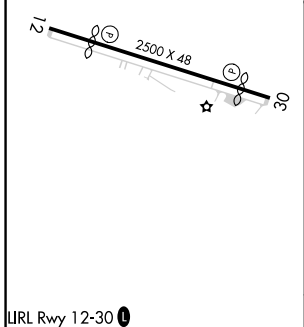
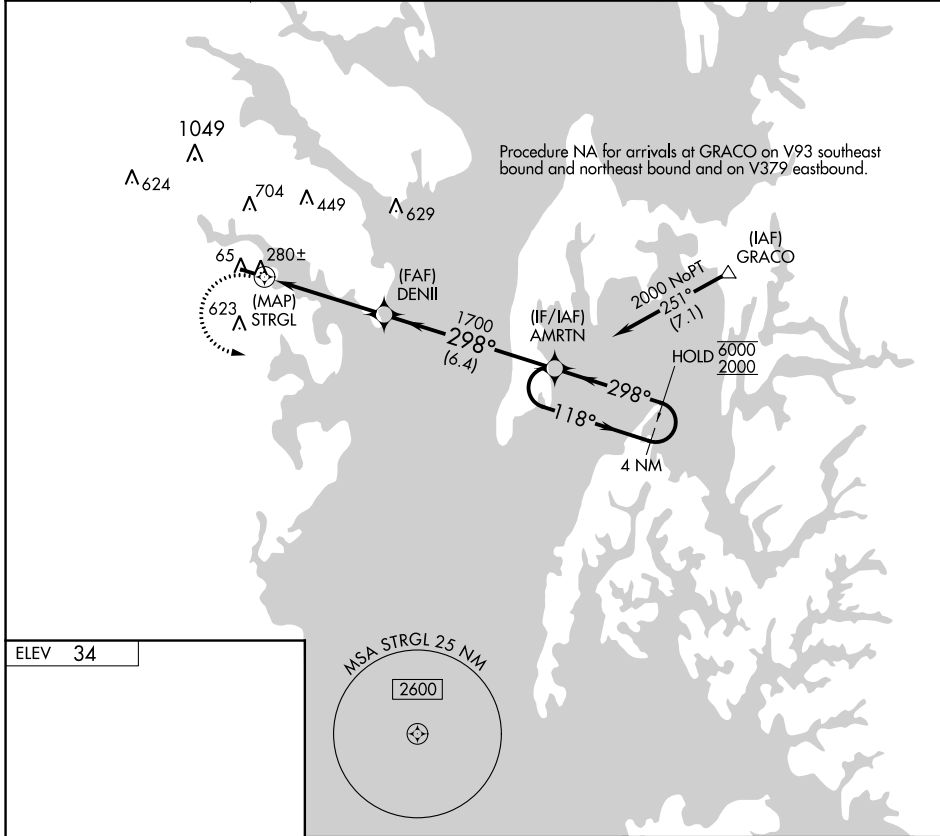
APP CRS 298°	Rwy Idg TDZE Apt Elev	N/A N/A 34
------------------------	-----------------------------	---------------------------------------

RNAV (GPS)-A

LEE (ANP)

RNP APCH-GPS.	MISSED APPROACH: Climbing left turn to 2000 direct AMRTN and hold.
<p>Procedure NA at night. Rwy 12, and 30 helicopter visibility reduction below 1 SM NA. Use Baltimore/Washington Intl Thurgood Marshall altimeter setting.</p>	

BWI ASOS 115.1 127.8	POTOMAC APP CON 119.7 290.475	CTAF 122.9
--------------------------------	---	----------------------



NE-3, 08 SEP 2022 to 06 OCT 2022

NE-3, 08 SEP 2022 to 06 OCT 2022