

WAAS CH 45631 W23A	APP CRS 230°	Rwy Idg TDZE Apt Elev	4099 573 584
--	------------------------	-----------------------------	---

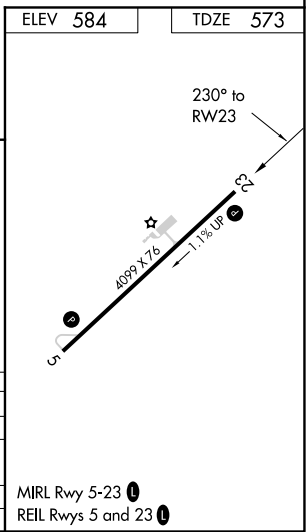
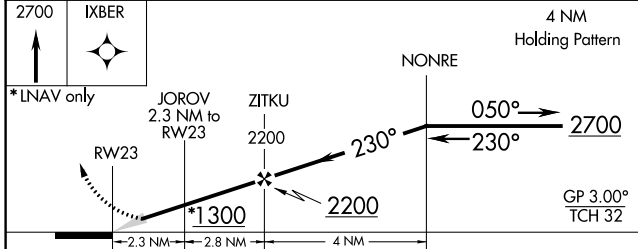
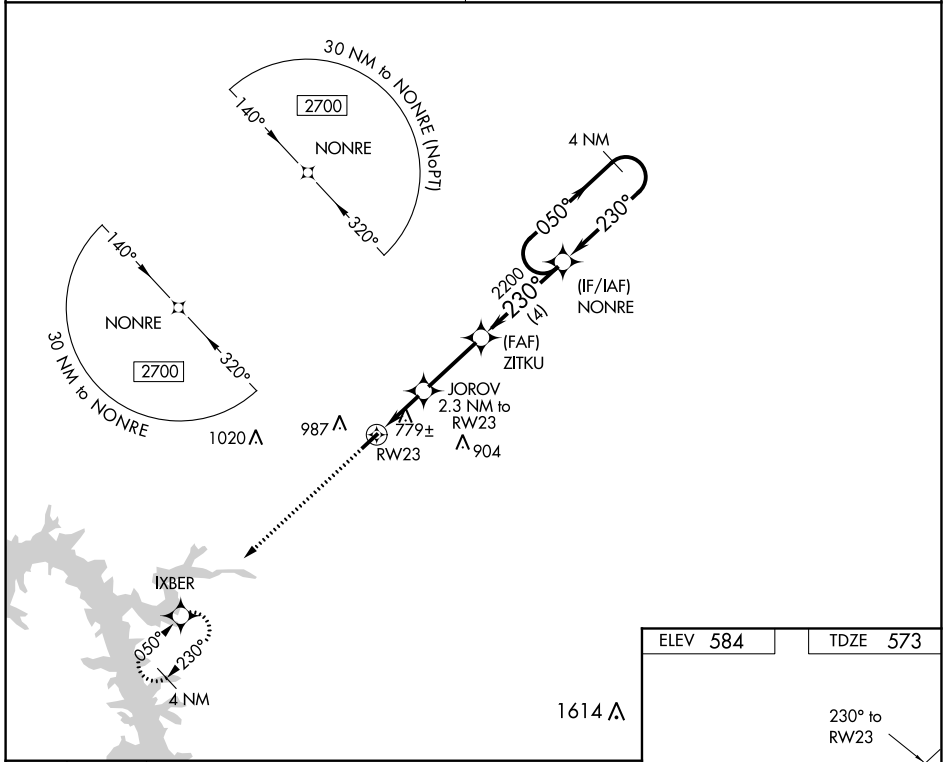
RNAV (GPS) RWY 23

PRINCETON-CALDWELL COUNTY (2M \emptyset)

▼ Baro-VNAV NA. Use Campbell AAF (Fort Campbell) altimeter setting; when not received, use Madisonville Rgnl altimeter setting and increase all DA 6 feet and all MDA 20 feet.
▲ NA DME/DME RNP-0.3 NA.

MISSED APPROACH: Climb to 2700 direct IXBER and hold.

CAMPBELL APP CON 118.1 269.525	UNICOM 122.8 (CTAF)
--	-------------------------------



CATEGORY	A	B	C	D
LPV DA	898-1 $\frac{1}{8}$	325 (400-1 $\frac{1}{8}$)		NA
RNAV/VNAV DA	1215-2 $\frac{1}{2}$	642 (700-2 $\frac{1}{2}$)		NA
RNAV MDA	1120-1	579 (600-1)		NA
CIRCLING	1420-1 $\frac{1}{4}$	836 (900-1 $\frac{1}{4}$)		NA

SE-1, 08 SEP 2022 to 06 OCT 2022

SE-1, 08 SEP 2022 to 06 OCT 2022

MIRL Rwy 5-23 **①**
REIL Rwys 5 and 23 **①**