

WAAS CH <b>69238</b> <b>W23A</b>	APP CRS <b>231°</b>	Rwy Idg TDZE Apt Elev	<b>4003</b> <b>964</b> <b>964</b>
--	------------------------	-----------------------------	---

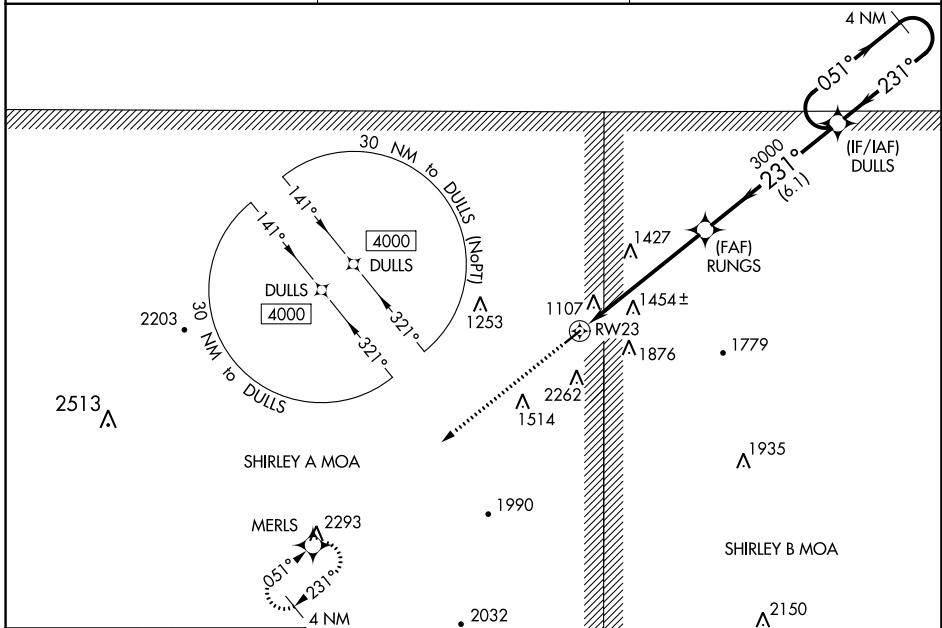
# RNAV (GPS) RWY 23

SEARCY COUNTY (4A5)

**▽** DME/DME RNP-0.3 NA. Procedure NA at night. Circling NA SE of Rwy 5-23. Baro-VNAV NA. Use Flippin altimeter setting; when not received, use Harrison altimeter setting and increase all Cats LPV DA to 1555 and visibility 1/8 mile, LNAV/VNAV all Cats DA to 2016, and all MDA 60 feet, LNAV Cat B/C and Circling Cat C visibility 1/4 mile. Helicopter visibility reduction below 1 SM NA.

**△ NA** MISSED APPROACH: Climb to 4000 direct MERLS and hold.

FLP AWOS-3 <b>132.075</b>	MEMPHIS CENTER <b>126.85 281.55</b>	CTAF <b>122.9 0</b>
------------------------------	--	------------------------



SC-1, 08 SEP 2022 to 06 OCT 2022

SC-1, 08 SEP 2022 to 06 OCT 2022

ELEV 964	TDZE 964				
		4000	MERLS	4 NM Holding Pattern	
		RUNGS	3000	231°	4000
		RWY 23	3000	231°	GP 3.25° TCH 44
		-5.8 NM		6.1 NM	
CATEGORY	A	B	C	D	
LPV DA	1512-1¾		548 (600-1¾)	NA	
LNAV/VNAV DA	1973-4		1009 (1100-4)	NA	
LNAV MDA	1760-1 796 (800-1)	1760-1¼ 796 (800-1¼)	1760-2½ 796 (800-2½)	NA	
<b>C</b> CIRCLING	1760-1 796 (800-1)	1760-1¼ 796 (800-1¼)	1760-2½ 796 (800-2½)	NA	