

WAAS CH 42733 W18A	APP CRS 181°	Rwy Idg TDZE Apt Elev	4021 219 219
--	------------------------	-----------------------------	---

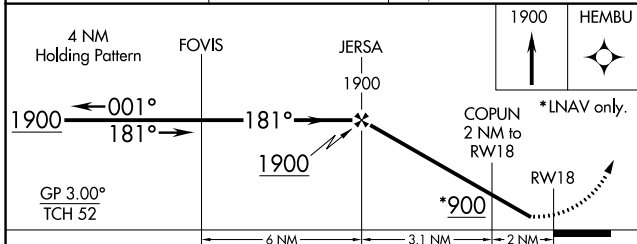
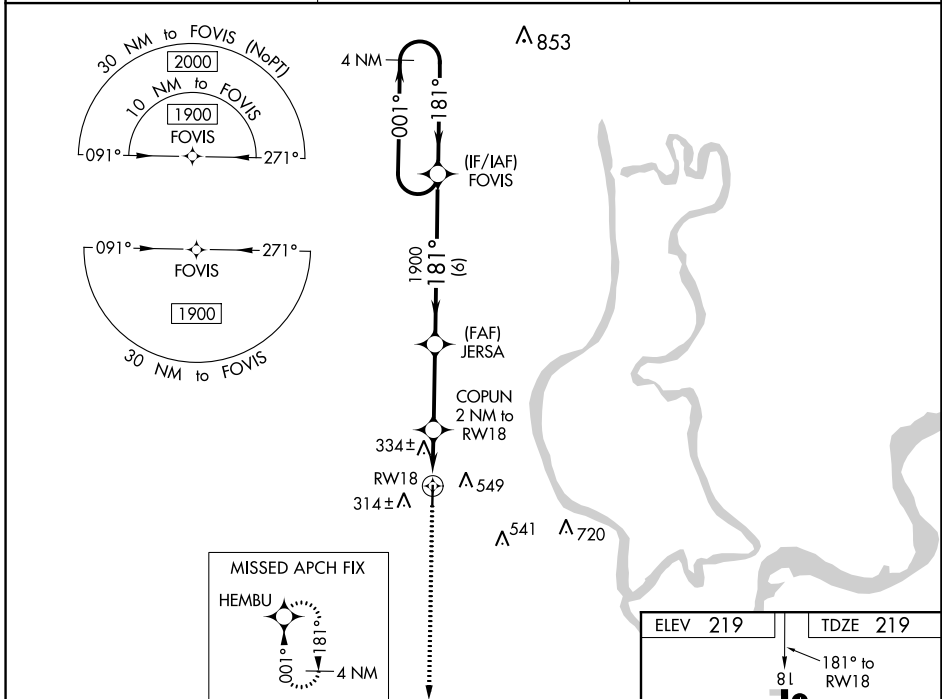
RNAV (GPS) RWY 18

MARIANNA/LEE COUNTY-STEVE EDWARDS FLD (6M7)

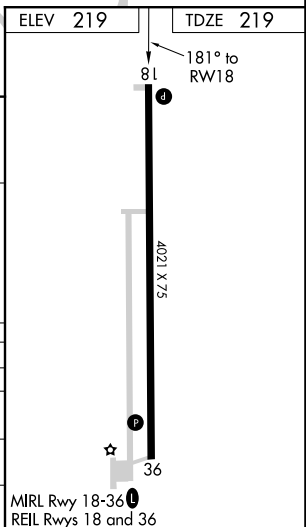
▽ Baro-VNAV NA. DME/DME RNP-0.3 NA. Helicopter visibility reduction below 1 SM NA.
△ NA Rwy 18 Straight-in and Circling Minimums NA at night. Use Tunica altimeter setting, when not available use West Memphis altimeter setting and increase all DA 25 feet and all MDA 40 feet, increase LPV all Cats and LNAV/VNAV all Cats visibility 1/8 mile and Circling Cat C visibility 1/4 mile.

MISSED APPROACH:
Climb to 1900 direct HEMBU and hold.

UTA AWOS-3 118.075	MEMPHIS CENTER 135.3 335.8	UNICOM 122.8 (CTAF) ①
------------------------------	--------------------------------------	---------------------------------



CATEGORY	A	B	C	D
LPV DA	538-1	319 (400-1)		NA
LNAV/VNAV DA	531-1	312 (400-1)		NA
LNAV MDA	660-1	441 (500-1)	660-1 3/8 441 (500-1 3/8)	NA
C CIRCLING	920-1	701 (800-1)	920-2 701 (800-2)	NA



SC-1, 08 SEP 2022 to 06 OCT 2022

SC-1, 08 SEP 2022 to 06 OCT 2022