

APP CRS <b>191°</b>	Rwy Idg TDZE Apt Elev	<b>5003</b> <b>39</b> <b>62</b>
------------------------	-----------------------------	---------------------------------------

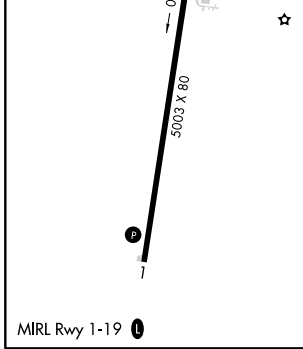
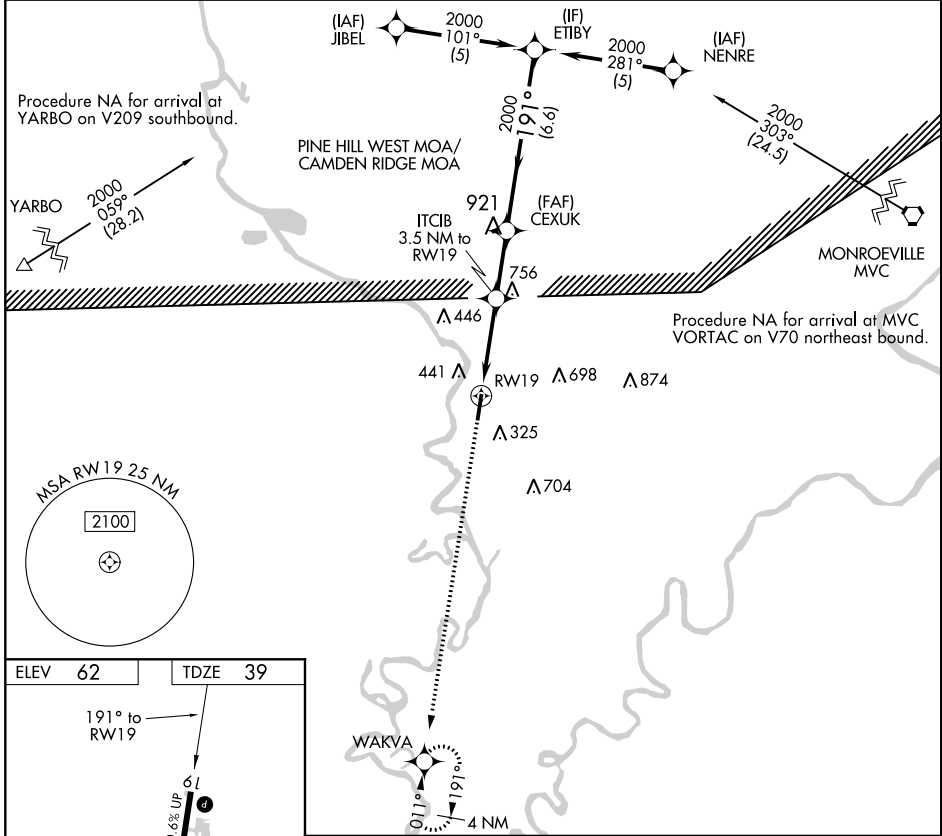
# RNAV (GPS) RWY 19

JACKSON MUNI (4R3)

**NA** DME/DME RNP-0.3 NA. Procedure NA at night. Visibility reduction by helicopters NA. Use Evergreen altimeter setting; when not received, use Mobile Rgnl altimeter setting and increase all MDA 20 feet.

**MISSED APPROACH:** Climb to 2000 direct WAKVA and hold.

GZH ASOS <b>133.425</b>	HOUSTON CENTER <b>127.65 285.475</b>	CTAF <b>122.90</b>
----------------------------	---	-----------------------



2000	WAKVA	VGSI and descent angles not coincident (VGSI Angle 3.00/TCH 39).		ETIBY
↑	✧	CEXUK	191°	2000
		ITCIB 3.5 NM to RW19		Procedure Turn NA
		RW19	1320	
		3.35° TCH 39		
		3.5 NM	2.5 NM	6.6 NM
CATEGORY	A	B	C	D
LNAV MDA	1000-1¼ 961 (1000-1¼)	1000-1½ 961 (1000-1½)	1000-3	961 (1000-3)
CIRCLING	1000-1¼ 938 (1000-1¼)	1000-1½ 938 (1000-1½)	1000-3 938 (1000-3)	1140-3 1078 (1100-3)

SE-4, 08 SEP 2022 to 06 OCT 2022

SE-4, 08 SEP 2022 to 06 OCT 2022