

WAAS CH 90440 W13A	APP CRS 134°	Rwy Idg TDZE Apt Elev	4148 669 674
--	------------------------	-----------------------------	---

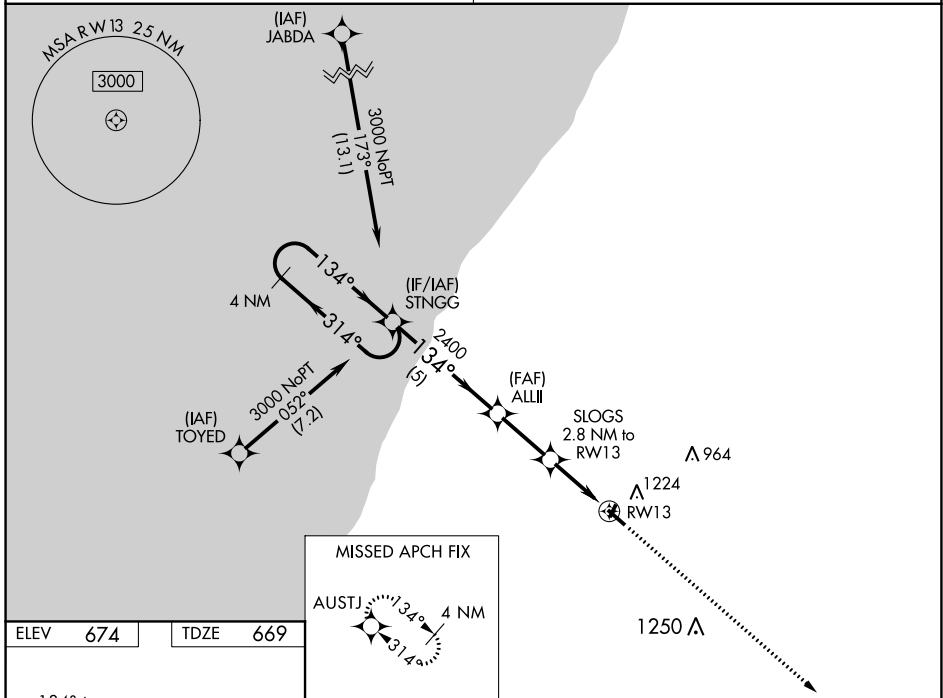
RNAV (GPS) RWY 13

ANDREWS UNIVERSITY AIRPARK (C20)

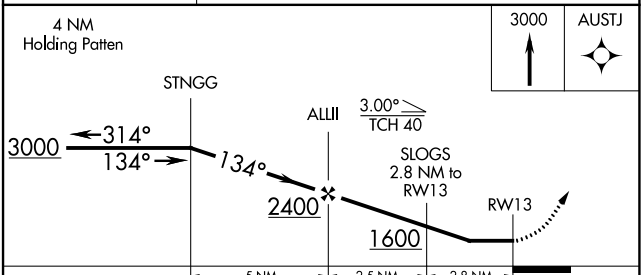
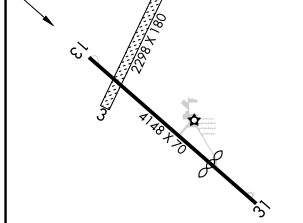
⚠ Rwy 13 helicopter visibility reduction below 1 SM NA. DME/DME RNP-0.3 NA.
⚠ Procedure NA at night. Use Benton Harbor altimeter setting; when not received, use South Bend Int altimeter setting and increase all MDA 40 feet. Increase LP and LNAV Cats C/D visibility 1/8 SM and Circling Cats B/C 1/4 SM.

MISSED APPROACH: Climb to 3000 direct AUSTJ and hold.

SOUTH BEND APP CON * 118.55 257.8	UNICOM 122.7 (CTAF) 0
---	---------------------------------



ELEV 674	TDZE 669
----------	----------



CATEGORY	A	B	C	D
LP MDA	1100-1	431 (500-1)	1100-1¼	431 (500-1¼)
LNAV MDA	1280-1	611 (700-1)	1280-1¾	611 (700-1¾)
C CIRCLING	1620-1¼	946 (1000-1¼)	1620-2¾ 946 (1000-2¾)	1620-3 946 (1000-3)

EC-1, 08 SEP 2022 to 06 OCT 2022

EC-1, 08 SEP 2022 to 06 OCT 2022