

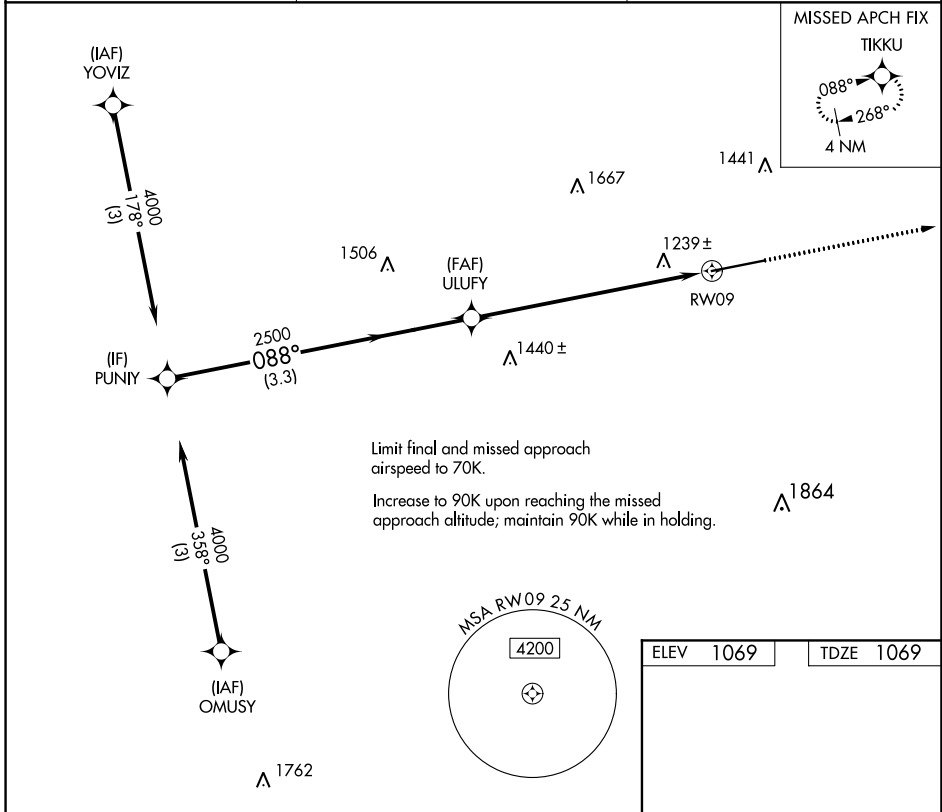
WAAS CH 50241 W09B	APP CRS 088°	Rwy Idg TDZE Apt Elev	3500 1069 1069
--	------------------------	-----------------------------	---

COPTER RNAV (GPS) Y RWY 9

GREENE COUNTY (WAY)

RNP APCH.		MISSED APPROACH: Climb to 4000 direct TIKKU and hold, continue climb-in-hold to 4000.
▼ ▲ NA	Use Washington altimeter setting.	

AFJ AWOS-3PT 119.175	CLARKSBURG APP CON★ 121.15 284.65	UNICOM 122.8 (CTAF) 0
--------------------------------	---	---------------------------------



NE-4, 08 SEP 2022 to 06 OCT 2022

NE-4, 08 SEP 2022 to 06 OCT 2022

ELEV 1069	TDZE 1069
-----------	-----------

