

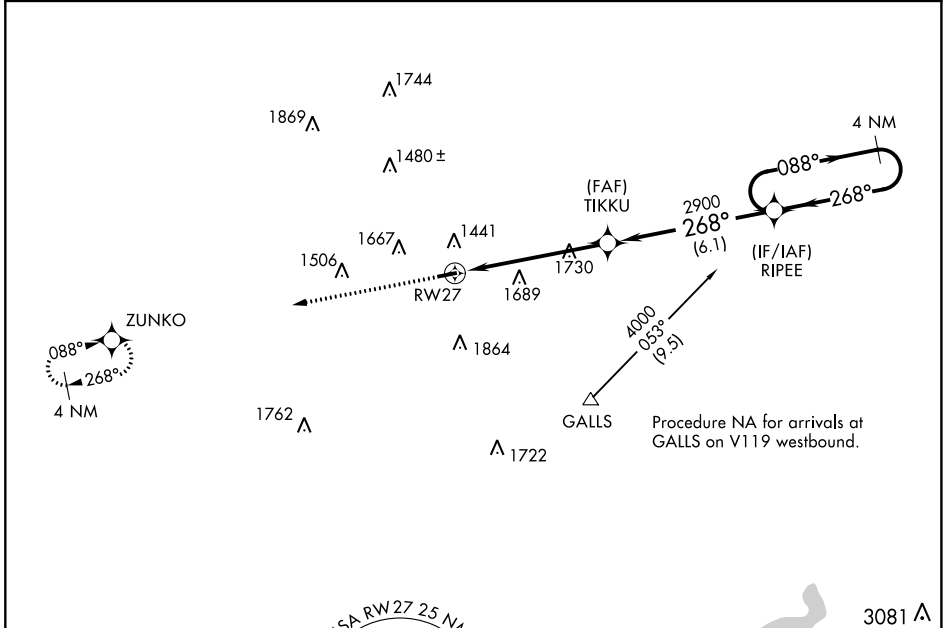
APP CRS <b>268°</b>	Rwy Idg <b>3500</b>
	TDZE <b>1069</b>
	Apt Elev <b>1069</b>

# RNAV (GPS) RWY 27

GREENE COUNTY (WAY)

RNP APCH.	<p>▼ Rwy 27 helicopter visibility reduction below 1 SM NA. Use Washington altimeter setting, when not received use Morgantown altimeter setting and increase all MDAs 20 feet. Straight-in, Circling Rwy 27 NA at night.</p> <p>▲ NA</p>	MISSED APPROACH: Climb to 4000 direct ZUNKO and hold.
-----------	--	---

AFJ AWOS-3PT <b>119.175</b>	CLARKSBURG APP CON* <b>121.15 284.65</b>	UNICOM <b>122.8 (CTAF) 0</b>
--------------------------------	---	---------------------------------



NE-4, 08 SEP 2022 to 06 OCT 2022

NE-4, 08 SEP 2022 to 06 OCT 2022

ELEV 1069	TDZE 1069	MSA RW27 25 NM 4200		
CATEGORY	A	B	C	D
RNAV MDA	2100-1¼ 1031 (1100-1¼)	2100-1½ 1031 (1100-1½)	2100-3 1031 (1100-3)	NA
CIRCLING	2100-1¼ 1031 (1100-1¼)	2220-1½ 1151 (1200-1½)	2220-3 1151 (1200-3)	NA