

APP CRS <b>360°</b>	Rwy Idg TDZE Apt Elev	<b>N/A</b> <b>N/A</b> <b>489</b>
------------------------	-----------------------------	----------------------------------------

# RNAV (GPS)-A

REIGLE FLD (58N)

**NA** Procedure NA at night. DME/DME RNP-0.3 NA. Visibility reduction by helicopters NA. Use Harrisburg Intl altimeter setting, when not received, use Fort Indiantown Gap altimeter setting.

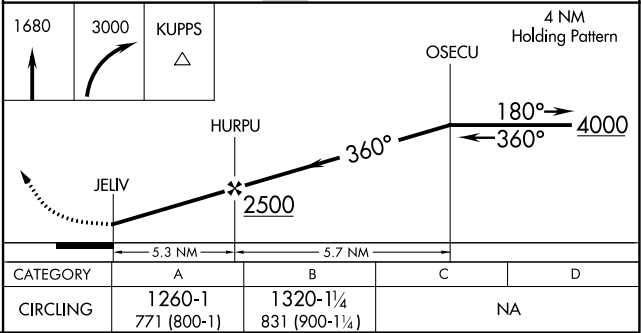
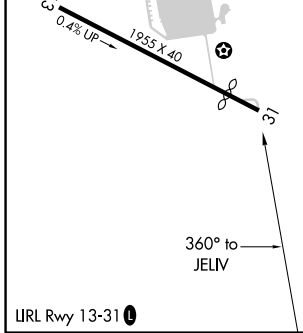
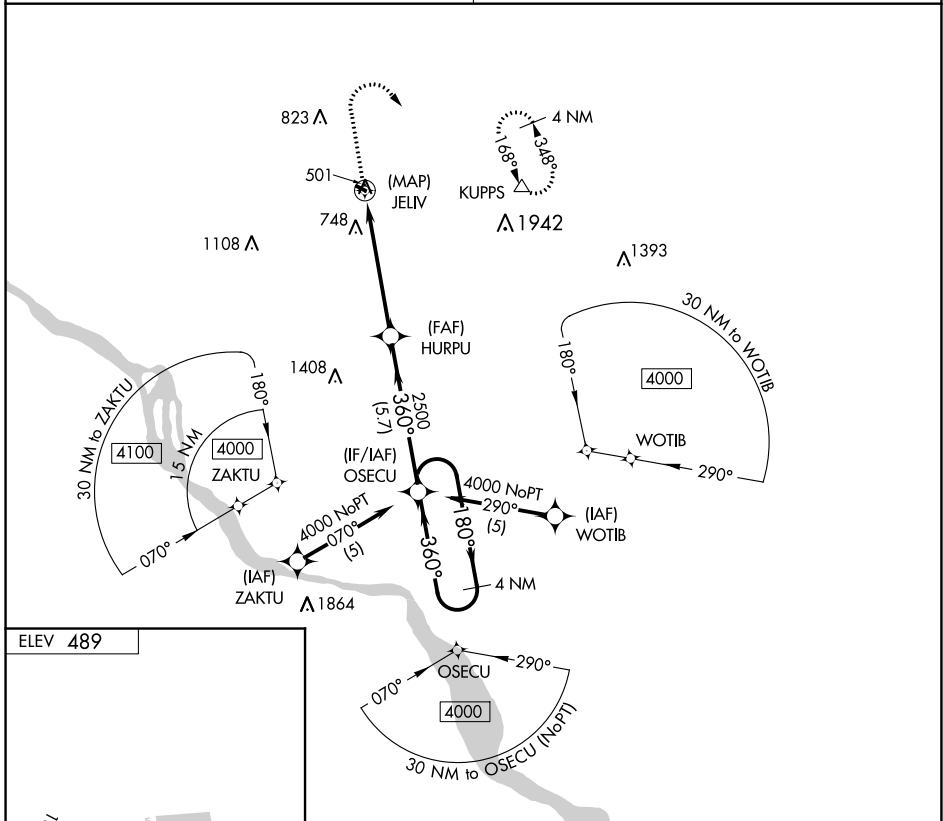
**MISSED APPROACH:** Climb to 1680 then climbing right turn to 3000 direct KUPPS and hold.

HARRISBURG APP CON

<b>118.25</b>	<b>269.45</b>	(001°-079°)
<b>126.45</b>	<b>281.525</b>	(080°-210°)
<b>124.1</b>	<b>273.525</b>	(211°-360°)

UNICOM

**122.8 (CTAF) 0**



NE-4, 08 SEP 2022 to 06 OCT 2022

NE-4, 08 SEP 2022 to 06 OCT 2022