

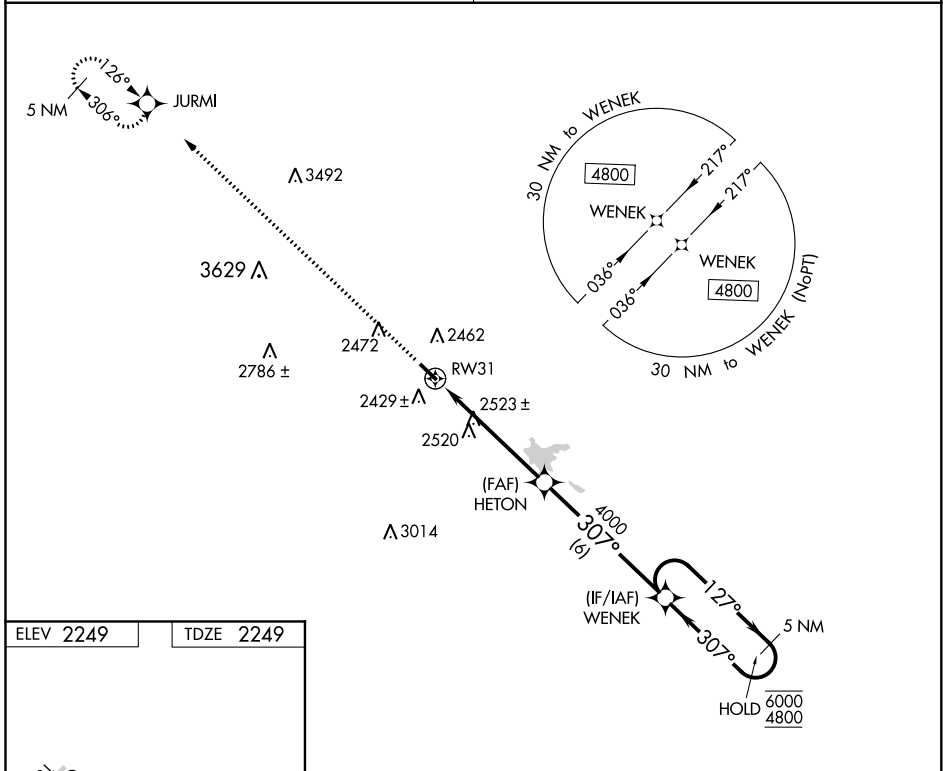
APP CRS <b>307°</b>	Rwy Idg <b>4200</b>
	TDZE <b>2249</b>
	Apt Elev <b>2249</b>

# RNAV (GPS) RWY 31

DUNN COUNTY WEYDAHL FLD (9Y1)

RNP APCH.	MISSED APPROACH: Climb to 4800 direct JURMI and hold.
<p><b>▼</b> Use Watford City altimeter setting, when not received, use Dickinson altimeter setting: increase all MDA's 40 feet and visibility Cat B ¼ SM; increase Circling visibility Cat C ¼ SM.</p> <p><b>▲ NA</b></p>	

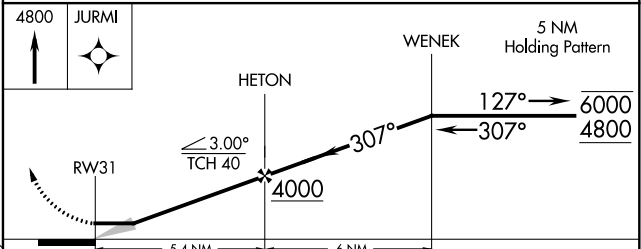
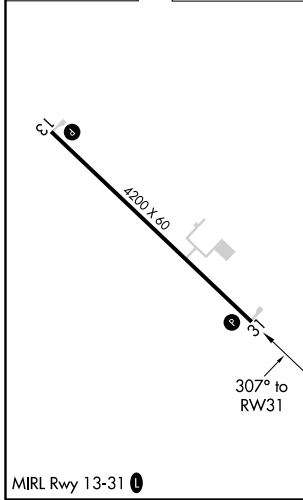
MINNEAPOLIS CENTER <b>124.25 236.825</b>	CTAF <b>122.9</b>
---	----------------------



NC-1, 08 SEP 2022 to 06 OCT 2022

NC-1, 08 SEP 2022 to 06 OCT 2022

ELEV 2249	TDZE 2249
-----------	-----------



CATEGORY	A	B	C	D
LNAV MDA	2960-1	711 (800-1)	2960-2 711 (800-2)	NA
<b>C</b> CIRCLING	2960-1	711 (800-1)	2960-2 711 (800-2)	NA