

GREEN BAY/AUSTIN STRAUBEL INTL (GRB)(KGRB) 7 SW UTC-6(-5DT) N44°29.08' W88°07.78' **GREEN BAY**
 695 B LRA Class I, ARFF Index C NOTAM FILE GRB MON Airport **H-2K, L-31A**
RWY 18-36: H8700X150 (CONC-GRVD) S-95, D-165, 2S-175, IAP, AD
 2D-275 PCN 57 R/D/W/T HIRL

RWY 18: REIL. PAPI(P4R)—GA 3.0° TCH 54'. RVR-R Thld dsplcd 499'.
 Road. Rgt tfc.

RWY 36: MALSR. PAPI(P4L)—GA 3.0° TCH 50'. RVR-T
RWY 06-24: H7700X150 (CONC-GRVD) S-90, D-160, 2S-175,
 2D-260 PCN 58 R/D/W/T HIRL

RWY 06: MALSR. PAPI(P4L)—GA 3.0° TCH 40'. RVR-T

RWY 24: PAPI(P4L)—GA 3.0° TCH 50'. RVR-R

LAND AND HOLD—SHORT OPERATIONS

LDG RWY	HOLD—SHORT POINT	AVBL LDG DIST
RWY 18	06-24	2692
RWY 24	18-36	6050
RWY 36	06-24	4932

RUNWAY DECLARED DISTANCE INFORMATION

RWY 06: TORA-7699 TODA-7699 ASDA-7699 LDA-7699
RWY 18: TORA-8700 TODA-8700 ASDA-8700 LDA-8201
RWY 24: TORA-7699 TODA-7699 ASDA-7699 LDA-7699
RWY 36: TORA-8201 TODA-8201 ASDA-8201 LDA-8201

SERVICE: S4 FUEL 100LL, JET A OX 1, 3 LGT ACTIVATE MALSR Rwy
 06 and Rwy 36; REIL Rwy 18; HIRL Rwy 06-24 and Rwy 18-36—CTAF. PAPI Rwy 06, Rwy 18, Rwy 24 and Rwy 36
 opr continuously. When twr is clsd the preferred rwy preset on low or med ints; increase ints—CTAF.

NOISE: Request voluntary compliance in avoiding noise sensitive areas N & E of arpt between midnight and 6 A.M.

AIRPORT REMARKS: Attended 1100-0400Z†. Birds on & invof arpt. Twy D wbound no turn onto Twy J. Twy J southwestbound no
 turn onto northbound Twy M. Twy M southbound no turn onto Twy J. Twy J southwestbound no turn onto eastbound Twy
 D. Twys C not avbl for acf with more than 30 pax seats. Flight Notification Service (ADCUS) available.

AIRPORT MANAGER: 920-498-4800

WEATHER DATA SOURCES: ASOS (920) 494-7140 LLWAS.

COMMUNICATIONS: CTAF 118.7 ATIS 124.1

GREEN BAY RCO 122.2 (GREEN BAY RADIO)

Ⓡ GREEN BAY APP CON 119.4 (1130-0530Z†)

Ⓡ GREEN BAY DEP CON 126.55 (1130-0530Z†)

Ⓡ MINNEAPOLIS CENTER APP/DEP CON 125.55 (0530-1130Z†)

GREEN BAY TOWER 118.7 (1130-0530Z†) GND CON 121.9 CLNC DEL 121.75

CLEARANCE DELIVERY PHONE: When atc clsd for CD if una to ctc on FSS freq, ctc Minneapolis ARTCC at 651-463-5588.

AIRSPACE: CLASS C svc ctc APP CON svc 1130-0530Z†; other times CLASS E.

RADIO AIDS TO NAVIGATION: NOTAM FILE GRB.

(H) (H) VORTACW 115.5 GRB Chan 102 N44°33.31' W88°11.69' 146° 5.1 NM to fld. 767/1E.

VOR unusable:

270°-300° blo 7,000'

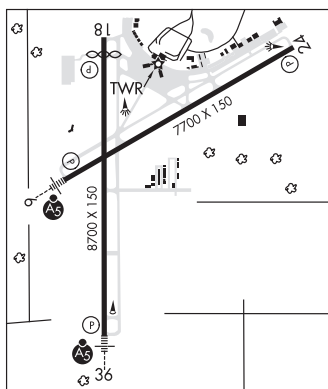
DEPRE NDB (MHW/LOM) 332 SG N44°23.91' W88°07.97' 003° 5.2 NM to fld. 638/2W.

FAMIS NDB (LOMW) 356 GR N44°26.43' W88°14.37' 063° 5.4 NM to fld. 711/2W.

ILS/DME 109.5 I-GRB Chan 32 Rwy 06. Class IE. LOM FAMIS NDB. Unmonitored when twr clsd. Localizer
 backcourse DME unusable byd 15° right of course.

ILS 109.9 I-SGZ Rwy 36. Class IE. LOM DEPRE NDB. Unmonitored when twr clsd.

ASR (1130-1730Z†)



GUTZMER'S TWIN OAKS (See WHITEWATER on page 393)