

CENTRALIA MUNI (ENL)(KENL) 2 SE UTC-6(-5DT) N38°30.91' W89°05.47'

ST LOUIS
H-5E, L-27C
IAP

534 B NOTAM FILE ENL

RWY 18-36: H5001X75 (ASPH) S-30, D-40 MIRL 0.3% up S

RWY 18: REIL. PAPI(P2L)—GA 3.0° TCH 44'. Tree.

RWY 36: REIL. PAPI(P2L)—GA 3.0° TCH 45'. Tree. Rgt tfc.

RWY 09-27: H3300X60 (ASPH) S-12.5 MIRL

RWY 09: Road. Rgt tfc.

SERVICE: FUEL 100LL, JET A LGT ACTIVATE MIRL Rwy 09-27 and Rwy 18-36; REIL Rwy 18-36 —CTAF.

AIRPORT REMARKS: Attended 1400Z†-dusk. For svc after hrs call (920)-728-4417.

AIRPORT MANAGER: 618-533-7622

WEATHER DATA SOURCES: AWOS-3 121.125 (618) 533-4417.

COMMUNICATIONS: CTAF/UNICOM 122.8

RCO 122.1R 115.0T (ST LOUIS RADIO)

KANSAS CENTER APP/DEP CON 127.7

CLEARANCE DELIVERY PHONE: For CD if una to ctc on FSS freq, ctc Kansas City ARTCC at 913-254-8508.

RADIO AIDS TO NAVIGATION: NOTAM FILE ENL.

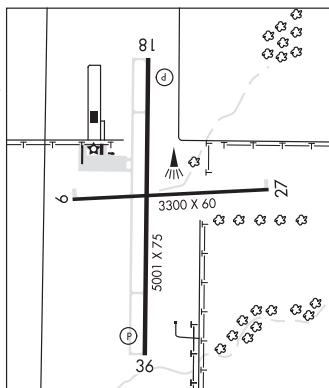
(H) (H) VORTAC 115.0 ENL Chan 97 N38°25.20'

W89°09.54' 025° 6.5 NM to fld. 546/4E.

VOR portion unusable:

100°-134° blo 3,000'

135°-140° blo 2,700'



CHAMPAIGN/URBANA

UNIVERSITY OF ILLINOIS/WILLARD (CMI)(KCM1) 5 SW UTC-6(-5DT) N40°02.31' W88°16.59'

CHICAGO
H-5E, L-27C
IAP, AD

755 B TPA-1505(750) Class I, ARFF Index B NOTAM FILE CMI

RWY 14L-32R: H8101X150 (ASPH-CONC-GRVD) S-100, D-180, 2S-175, 2D-260 PCN 63 R/D/X/T HIRL

RWY 14L: PAPI(P4L)—GA 3.0° TCH 48'. RVR-TR

RWY 32R: MALSR. PAPI(P4L)—GA 3.0° TCH 54'. RVR-TR

RWY 04-22: H6502X150 (ASPH-GRVD) S-120, D-225, 2S-175, 2D-300 PCN 79 F/D/X/T MIRL

RWY 22: Tree.

RWY 14R-32L: H3816X75 (ASPH) S-12.5, D-12.5, 2S-175 MIRL

RWY 14R: PAPI(P4L)—GA 3.0° TCH 36'.

RWY 32L: PAPI(P4L)—GA 3.0° TCH 35'.

LAND AND HOLD—SHORT OPERATIONS

LDG RWY	HOLD—SHORT POINT	AVBL LDG DIST
RWY 04	14L-32R	3600
RWY 14L	04-22	3500
RWY 32R	04-22	4050

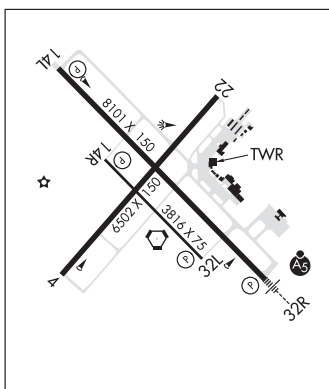
RUNWAY DECLARED DISTANCE INFORMATION

RWY 04:	TORA-6502	TODA-6502	ASDA-6502	LDA-6502
RWY 14L:	TORA-8101	TODA-8101	ASDA-8101	LDA-8101
RWY 14R:	TORA-3816	TODA-3816	ASDA-3816	LDA-3816
RWY 22:	TORA-6502	TODA-6502	ASDA-6502	LDA-6502
RWY 32L:	TORA-3816	TODA-3816	ASDA-3816	LDA-3816
RWY 32R:	TORA-8101	TODA-8101	ASDA-8101	LDA-8101

SERVICE: S4 FUEL 100LL, JET A1+ OX 1 LGT ACTIVATE MALSR Rwy 32R; MIRL Rwy 04-22; HIRL Rwy

14L-32R—CTAF. When twr clsd HIRL Rwy 14L-32R preset on low ints, to incr ints—CTAF. PAPI Rwy 14L and Rwy 32R opr consly.

AIRPORT REMARKS: Attended continuously. Birds on and invof arpt. Rwy 14R-32L CLOSED 0500-1200Z†. Rwy 14R-32L CLOSED to acct abv 12500 lbs. Rwy 14R-32L not avbl for skedd acr opns with more than 9 psgr seats or unscheduled acr at least 31 psgr seats. AER 22 and 32R not visible from each other. Twy A5 and Twy C1 SW of Rwy 14L-32R clsd to acct over 11,800 lbs. Twy A6 and Twy A7 adj to air carrier apron, not vsb from the twr. Rwy 32R calm wind rwy when twr is clsd. Transient parking on southeast GA apron only. U.S Customs User Fee Airport: 2 hrs PPR contact ofc on 217-729-7607.



CONTINUED ON NEXT PAGE

CONTINUED FROM PRECEDING PAGE

AIRPORT MANAGER: 217-244-8689

WEATHER DATA SOURCES: ASOS (217) 355-4072

COMMUNICATIONS: CTAF 120.4 ATIS 124.85 UNICOM 122.95

CHAMPAIGN RCO 122.1R 110.0T (ST LOUIS RADIO)

CHAMPAIGN/URBANA RCO 122.45 (ST LOUIS RADIO)

Ⓡ CHAMPAIGN APP/DEP CON 121.35 (319°-138°) 132.85 (139°-318°) (1200-0500Z‡)

Ⓡ CHICAGO CENTER APP/DEP CON 121.35 (0500-1200Z‡)

CHAMPAIGN TOWER 120.4 (1200-0500Z‡) GND CON 121.8 CLNC DEL 128.75

CLEARANCE DELIVERY PHONE: For CD if una to ctc on FSS freq, ctc Chicago ARTCC at 630-906-8921.

AIRSPACE: CLASS C svc ctc APP CON svc 1200-0500Z‡ other times CLASS G.

RADIO AIDS TO NAVIGATION: NOTAM FILE CMI.

CHAMPAIGN (L) (L) VORTAC 110.0 CMI Chan 37 N40°02.07' W88°16.56' at fld. 745/3E.

VEALS NDB (LOMW) 407 CM N39°57.97' W88°10.94' 318° 6.1 NM to fld. 684/3W.

ILS/DME 109.1 I-CMI Chan 28 Rwy 32R. Class IE. LOM VEALS NDB. Unmonitored when ATCT closed. LOC unusable byd 15° left of course.

ASR (1400-0200Z‡)

CHAMPAIGN N40°02.07' W88°16.56' NOTAM FILE CMI.

(L) (L) VORTAC 110.0 CMI Chan 37 at University Of Illinois/Willard. 745/3E.

RCO 122.1R 110.0T (SAINT LOUIS RADIO)

CHICAGO

L-27C