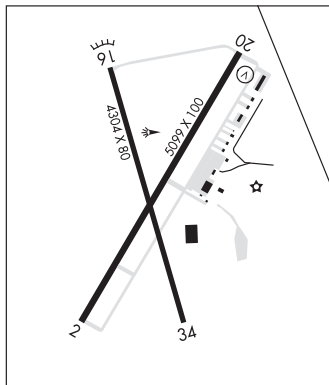


VERNON

WILBARGER CO (F05) 4 N UTC-6(-5DT) N34°13.54' W99°17.03'
 1265 B NOTAM FILE F05
RWY 02-20: H5099X100 (ASPH) S-30, D-40, 2D-60 MIRL
RWY 20: VASI(V4L)—GA 3.0° TCH 25'. Road.
RWY 16-34: H4304X80 (ASPH) S-10 MIRL
RWY 16: Road.
SERVICE: FUEL 100LL, JET A LGT VASI Rwy 20 opr consly; . MIRLS
 Dusk-Dawn.
AIRPORT REMARKS: Attended Mon-Sat 1400-2300Z†. Seasonal extsv
 aerial ag ops. For fuel after hours call 940-839-6365.
AIRPORT MANAGER: 940-552-2182
WEATHER DATA SOURCES: AWOS-3 118.525 (940) 552-8600.
COMMUNICATIONS: CTAF/UNICOM 122.8
 Ⓡ **ALTUS APP/DEP CON** 125.1 (Mon-Fri 1500-0830Z† clsd weekends and
 holidays)
 Ⓡ **FORT WORTH CENTER APP/DEP CON** 128.4 133.5 (Mon-Fri
 0830-1500Z†, 24 hrs weekends and holidays)
CLEARANCE DELIVERY PHONE: For CD ctc Fort Worth ARTCC at
 817-858-7584.
RADIO AIDS TO NAVIGATION: NOTAM FILE SPS.
WICHITA FALLS (H)(H) VORTACW 112.7 SPS Chan 74 N33°59.24'
 W98°35.61' 283° 37.2 NM to fld. 1133/10E.

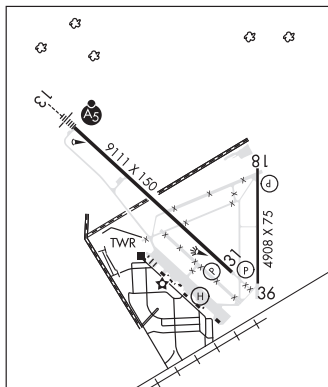
DALLAS-FT WORTH
H-6H, L-17B
IAP



VICTORIA RGNL (VCT)(KVCT) 5 NE UTC-6(-5DT) N28°51.25' W96°55.12'
 115 B TPA—See Remarks Class I, ARFF Index A NOTAM FILE VCT
RWY 13-31: H9111X150 (ASPH-GRVD) S-28, D-49, 2D-87 HIRL
RWY 13: MALSRL.
RWY 31: PAPI(P4L)—GA 3.0° TCH 55'. Rgt tfc.
RWY 18-36: H4908X75 (ASPH-GRVD) S-28, D-49, 2D-87 MIRL
RWY 18: REIL. PAPI(P2L)—GA 3.0° TCH 40'. Fence.
RWY 36: REIL. PAPI(P2L)—GA 3.0° TCH 40'. Pole.
RUNWAY DECLARED DISTANCE INFORMATION
RWY 13: TODA-9111 ASDA-9111 LDA-9111
RWY 18: TODA-4908 ASDA-4908 LDA-4908
RWY 31: TODA-9111 ASDA-9111 LDA-9111
RWY 36: TODA-4908 ASDA-4908 LDA-4908
SERVICE: S2 FUEL 100LL, JET A LGT HIRL Rwy 13-31 preset low intst,
 to incr intst and actvt MALSRL Rwy 13—CTAF. MIRL Rwy 18-36 preset
 med intst only. PAPI Rwy 31, 18 and 36 opr consly.
AIRPORT REMARKS: Attended Mon-Sat 1200-0200Z†, Sun 1200-0000Z†.
 Ad ap bird act. Between 0400-1300Z† all unscheduled air carrier ops
 with more than 9 passenger seats contact ARFF 361-582-5889. TPA
 for jets 1715(1600); for turbo prop, light aircraft, rotorcraft
 1215(1100).
AIRPORT MANAGER: 361-578-2704
WEATHER DATA SOURCES: ASOS 119.025 (361) 578-9916.
COMMUNICATIONS: CTAF 126.075 ATIS 119.025 UNICOM 122.7
 RCO 122.2 (MONTGOMERY COUNTY RADIO)
 Ⓡ **HOUSTON CENTER APP/DEP CON** 135.05
TOWER 126.075 (1300-0400Z†) GND CON 120.525
CLEARANCE DELIVERY PHONE: For CD if una to ctc on FSS freq, ctc Houston ARTCC at 281-230-5622.
AIRSPACE: CLASS D svc 1300-0400Z†; other times CLASS E.
RADIO AIDS TO NAVIGATION: NOTAM FILE VCT.
(L) (L) VORW/DME 109.0 VCT Chan 27 N28°54.02' W96°58.74' 125° 4.2 NM to fld. 125/6E.
 VOR unusable:
 345°-355° byd 30.0 NM
ILS/DME 111.5 I-VCT Chan 52 Rwy 13. Class IE. Unmonitored when ATCT clsd.

HELIPAD H1: H60X60 (ASPH)

HOUSTON
H-7C, L-201, 21A
IAP, AD



VULTURES ROW (See SANGER on page 407)