

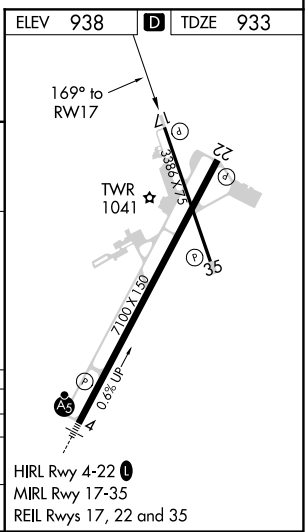
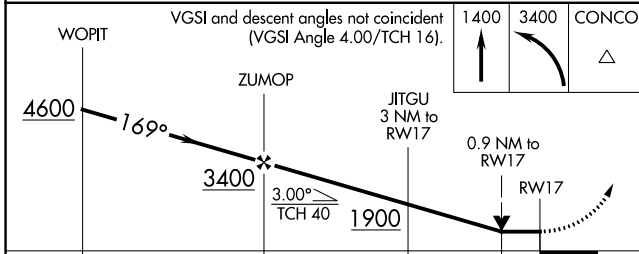
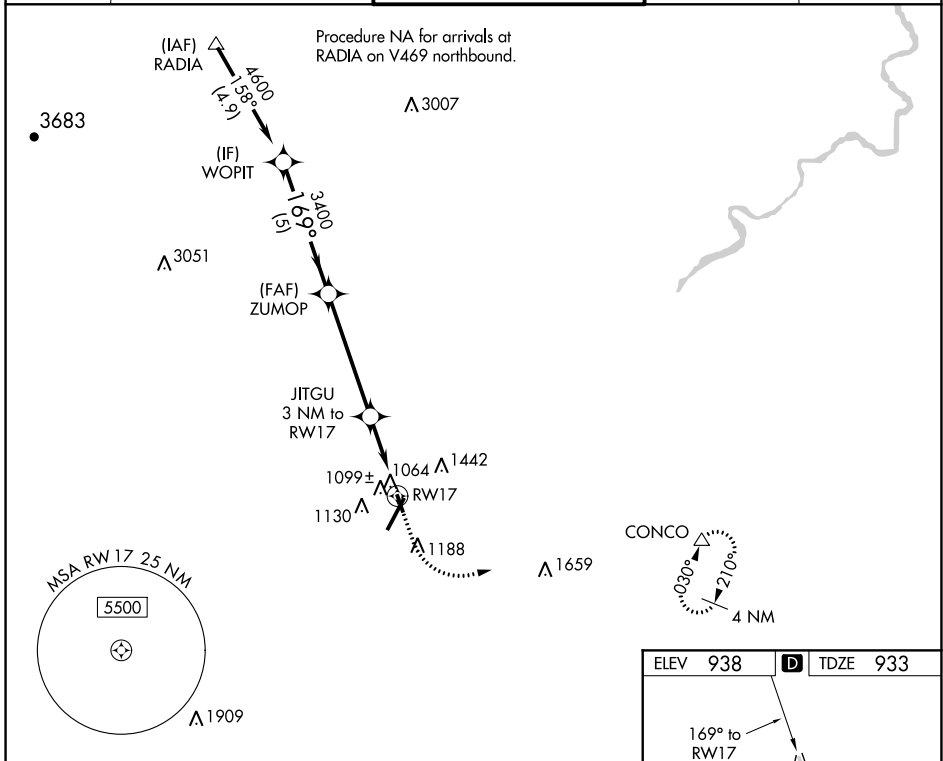
WAAS CH 48934 W17A	APP CRS 169°	Rwy Idg TDZE 933 Apt Elev 938	3386 933 938
--	------------------------	---	---

RNAV (GPS) RWY 17

LYNCHBURG RGNL/PRESTON GLENN FLD (LYH)

RNP APCH.	MISSED APPROACH: Climb to 1400 then climbing left turn to 3400 direct CONCO and hold.
<p>▼ Procedure NA at night.</p> <p>▲ Rwy 17 helicopter visibility reduction below 1 SM NA.</p>	

ATIS 119.8	ROANOKE APP CON 135.0 254.325	LYNCHBURG TOWER ★ 127.65 (CTAF) 257.8	GND CON 121.9	UNICOM 122.95
----------------------	---	---	-------------------------	-------------------------



CATEGORY	A	B	C	D
LP MDA	1320-1	387 (400-1)		NA
LNAV MDA	1360-1	427 (500-1)		NA
C CIRCLING	1660-1 722 (800-1)	1780-1¼ 842 (900-1¼)		NA

NE-3, 03 NOV 2022 to 01 DEC 2022

NE-3, 03 NOV 2022 to 01 DEC 2022